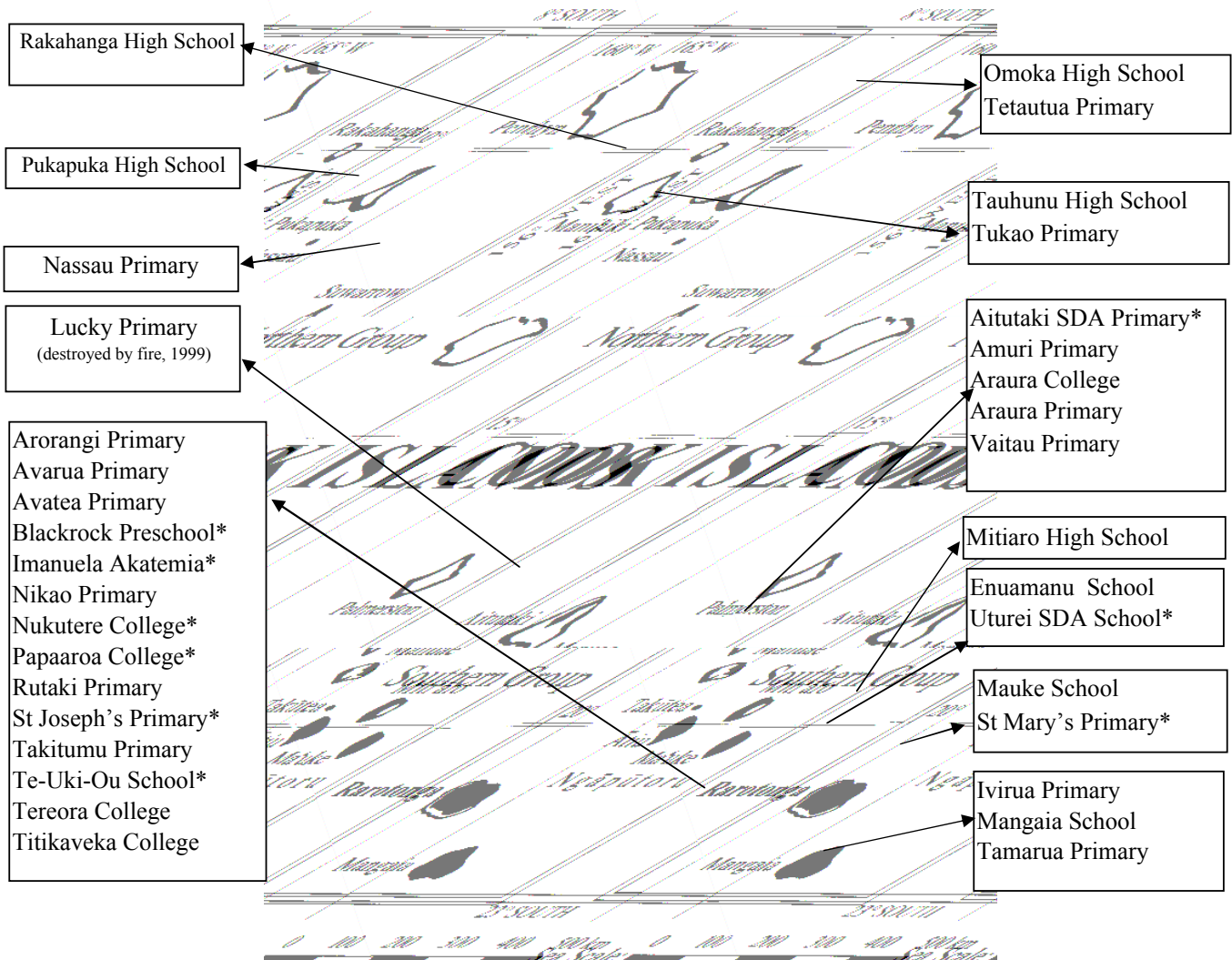


COOK ISLANDS SCHOOLS

DISTRIBUTION OF SCHOOLS

The Cook Islands consists of 15 islands. Rarotonga is the main island in terms of population and economic activity. The Southern Group, which excludes Rarotonga in this digest, consists of 7 islands, 2 of which (Manuae and Takutea) are not permanently populated. The least populated region is the Northern Group. The group consists of 7 islands with only Suvarrow lacking a permanent population. Schools are established on all 12 permanently populated islands except Palmerston. All of the 34 schools in the Cook Islands are co-educational. There are 14 schools on Rarotonga, 13 in the Southern Group and 7 in the Northern Group. In 1999 there were 36 schools in the Cook Islands. The reduction in schools is due to Lucky School in Palmerston being destroyed by fire and Oneroa School and Mangaia College amalgamating to form Mangaia School.

MAP OF COOK ISLANDS SCHOOLS



*Church or Private Schools

STATUS OF SCHOOLS

The Government has established schools on all twelve permanently inhabited islands although Lucky School on Palmerston is yet to be rebuilt following the 1999 fire. "Private " is used to denote a non-government school neither owned nor operated by a religious organisation. The two private schools, Blackrock Preschool and Te-Uki-Ou Primary, are located on Rarotonga. There are also four Church schools on Rarotonga. Two are administered by the Catholic Church (St Joseph's and Nukutere), one by the Seventh Day Adventist Church (Papaaroa) and one by the Assembly Of God Church (Imanuela Akatemia). The Catholic Church also administers a primary school (St Mary's) on Mauke and the SDA Church administers a primary school (Aitutaki SDA) on Aitutaki and the Uturei Adventist School on Atiu.

Status of Schools by Region

Status	Rarotonga	Northern Grp	Rarotonga	Total
Government	8	10	7	25
Church	4	3	0	7
Private	2	0	0	2
Total	14	13	7	34

Teachers and Students by School Status

Status	Schools	Teachers			Students			P-T Ratio
		Male	Female	Total	Male	Female	Total	
Church	7	8	30	38	276	254	530	14
Government	25	67	171	238	1992	1869	3861	16
Private	2	0	9	9	78	79	157	17
Total	34	75	210	285	2346	2202	4548	16

STUDENT : SCHOOL RATIOS

Island	Schools	Students	Student/Sch
Aitutaki	5	651	130
Atiu	2	200	100
Mangaia	3	275	92
Manihiki	2	121	61
Mauke	2	202	101
Mitiaro	1	75	75
Nassau	1	37	37
Palmerston	0	0	0
Penrhyn	2	138	69
Pukapuka	1	264	264
Rakahanga	1	31	31
Rarotonga	14	2554	182
Total	34	4548	134

Geographical isolation is the reason for the low student : school ratio on Manihiki and Penrhyn, each island having 2 schools serving communities separated by a wide lagoon. The student : school ratio on Mangaia is low due to small primary schools. The ratios on Atiu and Mauke are depressed by each island having a church school as well as a government school.

LEVELS OF SCHOOL

PRE-SCHOOL students are children aged from 3 years 6 months up to 4 years 11 months inclusive who are voluntarily enrolled for pre-school instruction.

PRIMARY students are children who are enrolled for instruction at Grade 1 - 6 level. Attendance is compulsory from the age of 5. The expected age range is from 5 to 10 years if a child spends one year in each grade.

SECONDARY students are children and young adults who are enrolled for instruction at Form 1 - 7 level. Attendance is compulsory until the end of the year in which a student turns 15 years of age.

LEVELS	RANGE	SCHOOLS	NAME OF SCHOOLS
Preschool only	PreS	1	Blackrock
Preschool & Primary	PreS - G6	9	Takitumu, Rutaki, St Joseph's, Amuri, Araura Primary, Vaitau Aitutaki SDA, Ivirua, Uturei Adventist
Primary	G1 - G6	1	Tamarua
Preschool, Primary & Secondary	PreS - F2	6	Avarua, Nikao, Te-Uki-Ou, Arorangi, St Mary's, Tetautua
	PreS - F4	3	Imanuela Akatemia, Mitiaro, Tukao
	PreS - F5CI	5	Pukapuka, Nassau, Tauhunu, Rakahanga, Omoka
	PreS - F5NZ	1	Enuamanu School
	PreS - F6	1	Mangaia School
	PreS - F7	1	Mauke School
Primary & Secondary	G1 - F2	1	Avatea
	G1 - F4	1	Papaaroa College
Secondary only	F1 - F5NZ	2	Titikaveka College, Nukutere College
	F1 - F6	1	Araura College
	F3 - F7	1	Tereora College

Schools with :	Rarotonga	Sth Group	Nth Group	Total
Pre-school pupils	9	11	7	27
Primary pupils	10	12	7	29
Secondary pupils	10	6	7	23

STUDENT ENROLMENTS

COMPARISON OF 2000 ENROLMENTS WITH 1996 AND 1999

DISTRICT	1996	1997	1998	1999	2000	1996/2000 Change	1996/2000 % Change	1999/2000 Change	1999/2000 % Change
Aitutaki	855	763	726	710	651	-204	-24%	-59	-8%
Atiu	316	283	251	216	200	-116	-37%	-16	-7%
Mangaia	378	357	341	308	275	-103	-27%	-33	-11%
Manihiki	171	178	41	124	121	-50	-29%	-3	-2%
Mauke	249	233	239	215	202	-47	-19%	-13	-6%
Mitiaro	100	95	80	80	75	-25	-25%	-5	-6%
Nassau	29	30	42	38	37	8	28%	-1	-3%
Palmerston	10	3	0	12	0	-10	-100%	-12	-100%
Penrhyn	195	171	166	141	138	-57	-29%	-3	-2%
Pukapuka	268	254	251	258	264	-4	-1%	6	2%
Rakahanga	58	67	63	46	31	-27	-47%	-15	-33%
Rarotonga	2931	2801	2750	2619	2554	-377	-13%	-65	-2%
Total	5560	5235	4950	4767	4548	-1012	-18%	-219	-5%

REGION	1996	1997	1998	1999	2000	1996/2000 Change	1996/2000 % Change	1999/2000 Change	1999/2000 % Change
Northern Group	731	703	563	619	591	-140	-19%	-28	-5%
Rarotonga	2931	2801	2750	2619	2554	-377	-13%	-65	-2%
Southern Group	1898	1731	1637	1529	1403	-495	-26%	-126	-8%

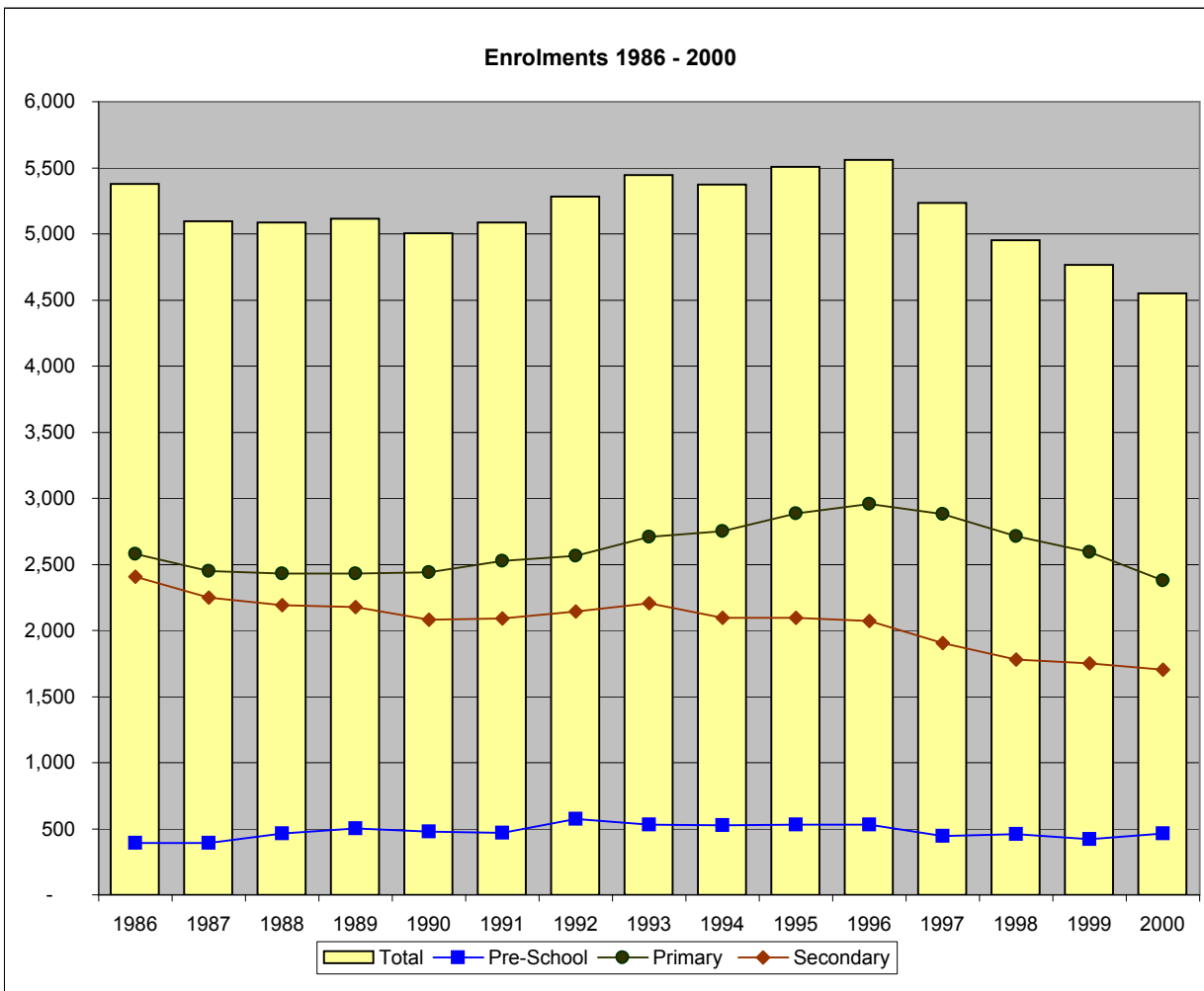
SCHOOL STATUS	1996	1997	1998	1999	2000	1996/2000 Change	1996/2000 % Change	1999/2000 Change	1999/2000 % Change
Government	4763	4480	4219	4054	3861	-902	-19%	-193	-5%
Non-government	797	755	731	713	687	-110	-14%	-26	-4%

1986-2000 ENROLMENTS BY LEVEL

Year	Pre-School	Primary	Secondary	Total
1986	393	2,580	2,406	5,379
1987	394	2,451	2,251	5,096
1988	463	2,431	2,190	5,084
1989	504	2,433	2,176	5,113
1990	480	2,442	2,082	5,004
1991	467	2,526	2,093	5,086
1992	575	2,564	2,143	5,282
1993	530	2,708	2,208	5,446
1994	527	2,750	2,094	5,371
1995	529	2,884	2,095	5,508
1996	530	2,956	2,074	5,560
1997	447	2,882	1,906	5,235
1998	460	2,711	1,779	4,950
1999	422	2,594	1,751	4,767
2000	465	2,379	1,704	4,548
Average	479	2,619	2,063	5,162

Data for 1995 to 2000 is derived from the EMIS. Data from 1986 to 1994 is derived from the March Monthly School Returns. School rolls have continued to decline since the economic crisis in 1996. The roll is now at its lowest level in over 14 years.

Since 1996 there has been a 12% decrease in preschool rolls, a 20% decrease in primary rolls and a 18% decrease in secondary rolls. The overall decrease since 1996 is 18%.



ENROLMENTS BY LEVEL AND GENDER

Island	School	Students				Pre-school		Primary		Secondary		Total	
		PreS	Prim	Sec	Total	Male	Female	Male	Female	Male	Female	Female	%Female
Aitutaki	Aitutaki SDA	8	28	0	36	4	4	13	15	0	0	19	52.8
	Amuri Primary	6	48	0	54	3	3	28	20	0	0	23	42.6
	Araura College	0	0	240	240	0	0	0	0	115	125	125	52.1
	Araura Primary	10	190	0	200	5	5	96	94	0	0	99	49.5
	Vaitau Primary	26	95	0	121	15	11	43	52	0	0	63	52.1
Atiu	Enuamanu School	13	111	66	190	8	5	51	60	30	36	101	53.2
	Utarei Adventist School	2	8	0	10	1	1	4	4	0	0	5	50.0
Mangaia	Ivirua Primary	8	33	0	41	4	4	17	16	0	0	20	48.8
	Mangaia School	24	75	123	222	11	13	44	31	63	60	104	46.8
	Tamarua Primary	0	12	0	12	0	0	5	7	0	0	7	58.3
Manihiki	Tauhunu High School	5	45	17	67	2	3	23	22	8	9	34	50.7
	Tukao Primary	8	33	13	54	8	0	16	17	8	5	22	40.7
Mauke	Mauke School	16	38	73	127	8	8	15	23	42	31	62	48.8
	St Mary's Primary	12	43	20	75	6	6	25	18	14	6	30	40.0
Mitiaro	Mitiaro High School	18	41	16	75	11	7	28	13	12	4	24	32.0
Nassau	Nassau Primary	3	26	8	37	3	0	18	8	5	3	11	29.7
Penryhn	Omoka High School	18	68	27	113	10	8	32	36	15	12	56	50
	Tetautua Primary	5	12	8	25	4	1	7	5	3	5	11	44
Pukapuka	Pukapuka High School	26	151	87	264	16	10	85	66	46	41	117	44
Rakahanga	Rakahanga High school	4	20	7	31	2	2	13	7	2	5	14	45
Rarotonga	Arorangi Primary School	33	115	32	180	14	19	63	52	21	11	82	46
	Avarua Primary	55	322	82	459	28	27	155	167	50	32	226	49
	Avatea Primary	0	281	100	381	0	0	141	140	58	42	182	48
	Blackrock Pre-school	30	0	0	30	19	11		0		0	11	37
	Imanuela Akatemia School	2	25	8	35	2	0	15	10	4	4	14	40
	Nikao Primary	32	86	25	143	14	18	54	32	14	11	61	43
	Nukutere College	0	0	125	125	0	0	0	0	50	75	75	60
	Papaaroa College	0	45	26	71	0	0	24	21	11	15	36	51
	Rutaki Primary	4	37	0	41	4	0	21	16	0	0	16	39
	St Joseph's Primary	38	140	0	178	17	21	86	54	0	0	75	42
	Takitumu Primary	26	173	0	199	14	12	98	75	0	0	87	44
	Tereora College	0	0	400	400	0	0	0	0	171	229	229	57
	Te-Uki-Ou School	33	78	16	127	18	15	33	45	8	8	68	54
Titikaveka College	0	0	185	185	0	0	0	0	92	93	93	50	
Total	465	2379	1704	4548	251	214	1253	1126	842	862	2202	48	

Island	Students				Pre-school		Primary		Secondary		Total	
	PreS	Prim	Sec	Total	Female	%Female	Female	%Female	Female	%Female	Female	%Female
Aitutaki	50	361	240	651	23	46	181	50	125	52	329	51
Atiu	15	119	66	200	6	40	64	54	36	55	106	53
Mangaia	32	120	123	275	17	53	54	45	60	49	131	48
Manihiki	13	78	30	121	3	23	39	50	14	47	56	46
Mauke	28	81	93	202	14	50	41	51	37	40	92	46
Mitiaro	18	41	16	75	7	39	13	32	4	25	24	32
Nassau	3	26	8	37	0	0	8	31	3	38	11	30
Penryhn	23	80	35	138	9	39	41	51	17	49	67	49
Pukapuka	26	151	87	264	10	38	66	44	41	47	117	44
Rakahanga	4	20	7	31	2	50	7	35	5	71	14	45
Rarotonga	253	1302	999	2554	123	49	612	47	520	52	1255	49
Total	465	2379	1704	4548	214	46	1126	47	862	51	2202	48

Region	Students				Pre-school		Primary		Secondary		Total	
	PreS	Prim	Sec	Total	Female	%Female	Female	%Female	Female	%Female	Female	%Female
Northern Group	69	355	167	591	24	35	161	45	80	48	265	45
Rarotonga	253	1302	999	2554	123	49	612	47	520	52	1255	49
Southern Group	143	722	538	1403	67	47	353	49	262	49	682	49
Total	465	2379	1704	4548	214	46	1126	47	862	51	2202	48

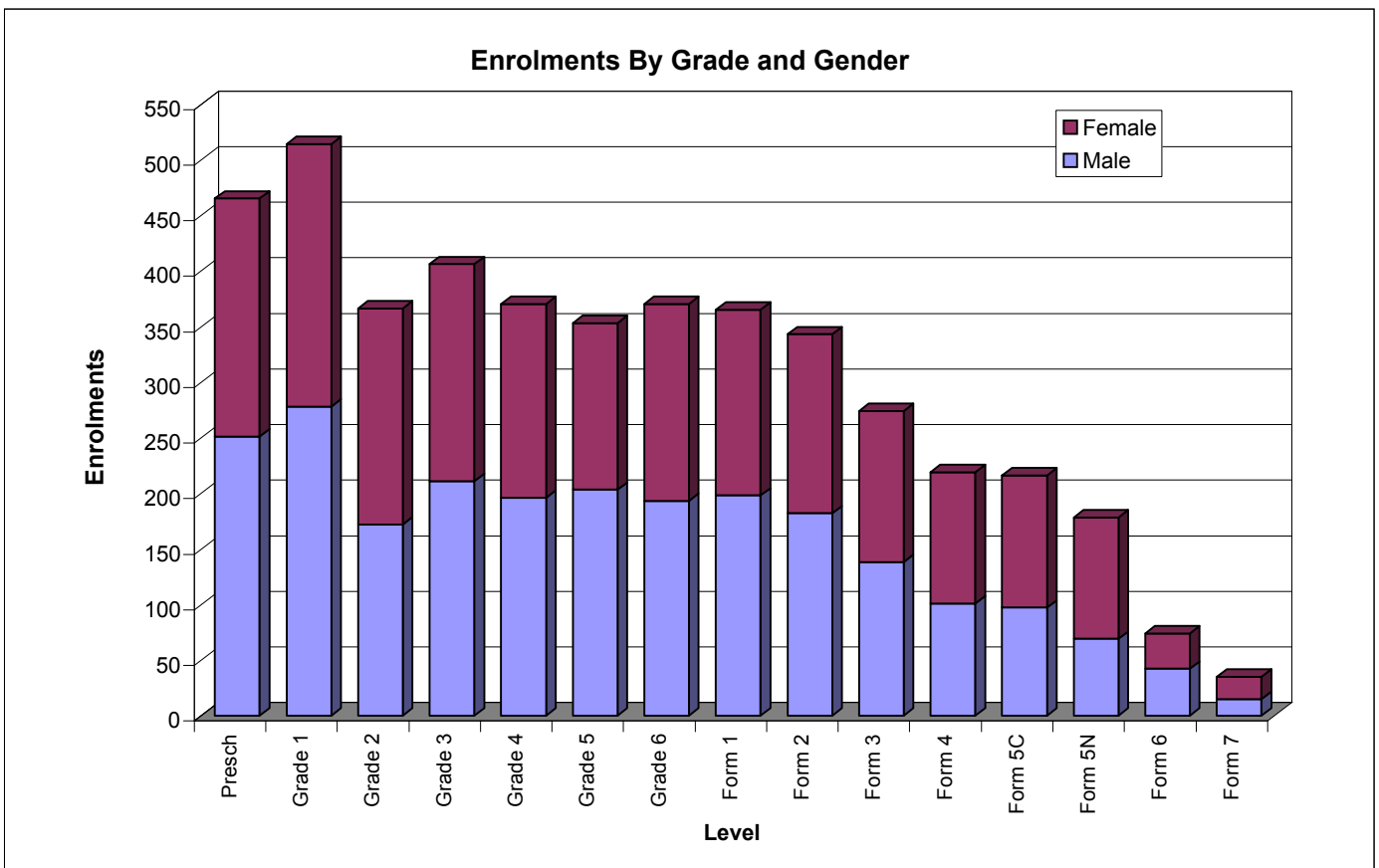
Status	Students				Pre-school		Primary		Secondary		Total	
	PreS	Prim	Sec	Total	Female	%Female	Female	%Female	Female	%Female	Female	%Female
Government	340	2012	1509	3861	151	44	939	47	775	51	1888	49
Non-government	125	367	195	687	63	50	187	51	87	45	314	46
Total	465	2379	1704	4548	214	46	1126	47	862	51	2202	48.4

ENROLMENTS BY GRADE AND GENDER

Grade/Form	Male	Female	%Female	Total
Presch	251	214	46	465
Grade 1	278	236	46	514
Grade 2	172	194	53	366
Grade 3	211	195	48	406
Grade 4	196	174	47	370
Grade 5	203	150	42	353
Grade 6	193	177	48	370
Form 1	198	167	46	365
Form 2	182	161	47	343
Form 3	138	136	50	274
Form 4	101	118	54	219
Form 5C	97	119	55	216
Form 5N	69	109	61	178
Form 6	42	32	43	74
Form 7	15	20	57	35
Total	2346	2202	48	4548

Girls make up 46% and 47% of the preschool and primary school (G1-G6) enrolment respectively. However 51% of secondary (F1-F7) students are girls who dominate at the senior secondary (F5N-F7) level accounting for 56% of the enrolment.

This year the New Entrant level has been discontinued. All "New Entrants" are classified as Grade 1 students and are included in the Grade 1 level.



ENROLMENTS BY GRADE AND ISLAND

ISLAND	Schools	G1	G2	G3	G4	G5	G6	F1	F2	F3	F4	F5C	F5N	F6	F7	PreSch	Total
Aitutaki	5	81	52	70	49	54	55	51	50	48	40	21	17	13	0	50	651
Atiu	2	20	21	19	24	21	14	15	16	14	6	12	3	0	0	15	200
Mangaia	3	20	24	23	11	17	25	17	23	22	16	28	15	2	0	32	275
Manihiki	2	21	7	8	14	14	14	12	8	5	4	1	0	0	0	13	121
Mauke	2	11	11	11	19	19	10	16	20	14	16	20	5	0	2	28	202
Mitiaro	1	9	6	6	5	6	9	8	1	2	5	0	0	0	0	18	75
Nassau	1	10	6	2	3	5	0	1	2	3	0	2	0	0	0	3	37
Palmerston	0	0	0	0	0	0	0	0	0	0	0	0	0	0	0	0	0
Penrhyn	2	19	7	12	13	8	21	15	10	5	2	3	0	0	0	23	138
Pukapuka	1	48	24	16	22	23	18	19	19	18	10	21	0	0	0	26	264
Rakahanga	1	5	4	0	5	2	4	0	4	0	0	3	0	0	0	4	31
Rarotonga	14	270	204	239	205	184	200	211	190	143	120	105	138	59	33	253	2554
Total	34	514	366	406	370	353	370	365	343	274	219	216	178	74	35	465	4548

ENROLMENTS BY GRADE AND REGION

REGION	Schools	G1	G2	G3	G4	G5	G6	F1	F2	F3	F4	F5C	F5N	F6	F7	PreSch	Total
Nth Group	7	103	48	38	57	52	57	47	43	31	16	30	0	0	0	69	591
Rarotonga	14	270	204	239	205	184	200	211	190	143	120	105	138	59	33	253	2554
Sth Group	13	141	114	129	108	117	113	107	110	100	83	81	40	15	2	143	1403

ENROLMENTS BY GRADE AND SCHOOL STATUS

STATUS	Schools	G1	G2	G3	G4	G5	G6	F1	F2	F3	F4	F5C	F5N	F6	F7	PreSch	Total
Government	25	437	312	348	315	297	303	308	292	252	197	193	158	74	35	340	3861
Non-govt	9	77	54	58	55	56	67	57	51	22	22	23	20	0	0	125	687

STUDENT REPETITION RATES AT EACH GRADE

Year	Roll	REPEATERS		OVERAGE	
		Number	%	Number	%
Pre Sch	465	28	6.0	-	
Grade 1	514	43	8.4	45	9
Grade 2	366	3	0.8	40	11
Grade 3	406	5	1.2	36	9
Grade 4	370	1	0.3	61	16
Grade 5	353	3	0.8	54	15
Grade 6	370	4	1.1	47	13
Form 1	365	4	1.1	60	16
Form 2	343	4	1.2	40	12
Form 3	274	0	0.0	46	17
Form 4	219	0	0.0	21	10
Form 5C	216	17	7.9	37	17
Form 5N	178	21	11.8	33	19
Form 6	74	3	4.1	10	14
Form 7	35	2	5.7	2	6
Total	4548	138	3.0	532	12

The overage data is based on the assumption that, on January 1, a Grade 1 student should be 5, a Grade 2 student should be 6 and each succeeding Grade student should be one year older. Those older than the assumed age for the grade are deemed to be overage. Compared to 1999 there has been a significant decrease in overage students. Total numbers have decreased from 968(20%) to 532(12%).

The number of students repeating at each level is directly recorded on each school's 2000 EMIS survey form by the school's principal. Formal entry criteria tend to apply to only Form 5NZSC level and higher.

ENROLMENTS BY GRADE/FORM

School	PreSch	Gr 1	Gr 2	Gr 3	Gr 4	Gr 5	Gr 6	F 1	F 2	F 3	F 4	F 5C	F 5N	F 6	F 7	Total
Blackrock Pre-school	30	0	0	0	0	0	0	0	0	0	0	0	0	0	0	30
Te-Uki-Ou School	33	20	13	11	9	8	17	10	6	0	0	0	0	0	0	127
Avarua Primary	55	60	57	67	53	43	42	41	41	0	0	0	0	0	0	459
Avatea Primary	0	57	35	54	44	40	51	53	47	0	0	0	0	0	0	381
Takitumu Primary	26	34	29	35	23	24	28	0	0	0	0	0	0	0	0	199
Nikao Primary	32	19	18	8	16	13	12	16	9	0	0	0	0	0	0	143
Rutaki Primary	4	12	7	6	5	4	3	0	0	0	0	0	0	0	0	41
St Joseph's Primary	38	22	19	24	24	25	26	0	0	0	0	0	0	0	0	178
Imanuela Akatemia School	2	7	4	3	4	3	4	1	4	2	1	0	0	0	0	35
Arorangi Primary School	33	25	17	25	21	19	8	18	14	0	0	0	0	0	0	180
Tereora College	0	0	0	0	0	0	0	0	0	88	79	56	85	59	33	400
Titikaveka College	0	0	0	0	0	0	0	34	40	33	19	26	33	0	0	185
Nukutere College	0	0	0	0	0	0	0	28	20	16	18	23	20	0	0	125
Papaaroa College	0	14	5	6	6	5	9	10	9	4	3	0	0	0	0	71
Amuri Primary	6	18	6	11	1	10	2	0	0	0	0	0	0	0	0	54
Araura Primary	10	47	25	34	28	30	26	0	0	0	0	0	0	0	0	200
Vaitau Primary	26	10	16	19	17	11	22	0	0	0	0	0	0	0	0	121
Aitutaki SDA	8	6	5	6	3	3	5	0	0	0	0	0	0	0	0	36
Araura College	0	0	0	0	0	0	0	51	50	48	40	21	17	13	0	240
Ivirua Primary	8	4	6	7	5	5	6	0	0	0	0	0	0	0	0	41
Tamarua Primary	0	6	6	0	0	0	0	0	0	0	0	0	0	0	0	12
Mangaia School	24	10	12	16	6	12	19	17	23	22	16	28	15	2	0	222
Utarei Adventist School	2	3	3	2	0	0	0	0	0	0	0	0	0	0	0	10
Enuamanu School	13	17	18	17	24	21	14	15	16	14	6	12	3	0	0	190
St Mary's Primary	12	5	5	6	9	12	6	8	12	0	0	0	0	0	0	75
Mauke School	16	6	6	5	10	7	4	8	8	14	16	20	5	0	2	127
Mitiaro High School	18	9	6	6	5	6	9	8	1	2	5	0	0	0	0	75
Pukapuka High School	26	48	24	16	22	23	18	19	19	18	10	21	0	0	0	264
Nassau Primary	3	10	6	2	3	5	0	1	2	3	0	2	0	0	0	37
Tukao Primary	8	7	2	5	8	5	6	3	4	2	4	0	0	0	0	54
Tauhunu High School	5	14	5	3	6	9	8	9	4	3	0	1	0	0	0	67
Rakahanga High school	4	5	4	0	5	2	4	0	4	0	0	3	0	0	0	31
Tetautua Primary	5	5	1	0	2	2	2	3	5	0	0	0	0	0	0	25
Omoka High School	18	14	6	12	11	6	19	12	5	5	2	3	0	0	0	113
Total	465	514	366	406	370	353	370	365	343	274	219	216	178	74	35	4548

1986 - 2000 ENROLMENTS BY GRADE/FORM

Year	PreSch	Gr 1	Gr 2	Gr 3	Gr 4	Gr 5	Gr 6	F 1	F 2	F 3	F 4	F 5C	F 5N	F 6	F 7	Total
1986	393	453	394	400	416	480	437	462	471	450	385	322	250	60	6	5,379
1987	-	467	387	382	378	399	438	431	436	430	370	310	197	61	16	4,702
1988	463	479	393	364	398	377	420	450	412	388	356	281	213	68	22	5,084
1989	504	481	405	386	385	394	382	404	434	363	327	299	232	84	33	5,113
1990	480	531	373	388	377	383	390	351	392	382	323	316	215	72	31	5,004
1991	467	567	392	408	402	390	367	387	357	364	337	318	221	85	24	5,086
1992	575	649	361	387	391	395	381	385	403	352	343	315	207	109	29	5,282
1993	530	745	408	387	389	386	393	406	380	381	324	315	243	108	51	5,446
1994	527	732	485	389	366	388	390	434	331	346	346	279	237	91	30	5,371
1995	529	736	488	460	430	368	402	369	408	370	306	324	202	96	20	5,508
1996	530	757	475	488	438	422	376	365	383	365	307	295	235	92	32	5,560
1997	447	733	433	442	444	445	385	329	343	335	298	272	215	90	24	5,235
1998	460	686	416	381	414	407	407	355	304	301	284	240	176	93	26	4,950
1999	422	667	405	397	367	381	377	359	314	277	267	222	183	96	33	4,767
2000	465	514	366	406	370	353	370	365	343	274	219	216	178	74	35	4,548
Average	453	613	412	404	398	398	394	390	381	359	319	288	214	85	27	5,136

ENROLMENT BY GRADE, AGE AND GENDER

Grade/Form	Total																	Total
	4	5	6	7	8	9	10	11	12	13	14	15	16	17	18	19+		
Presch	431	34	0	0	0	0	0	0	0	0	0	0	0	0	0	0	0	465
Grade 1	76	393	44	0	1	0	0	0	0	0	0	0	0	0	0	0	0	514
Grade 2	0	32	294	33	6	1	0	0	0	0	0	0	0	0	0	0	0	366
Grade 3	0	0	27	343	33	3	0	0	0	0	0	0	0	0	0	0	0	406
Grade 4	0	0	0	24	285	52	8	1	0	0	0	0	0	0	0	0	0	370
Grade 5	0	0	0	0	27	272	48	5	0	1	0	0	0	0	0	0	0	353
Grade 6	0	0	0	0	0	43	280	41	5	1	0	0	0	0	0	0	0	370
Form 1	0	0	0	0	0	0	45	260	52	8	0	0	0	0	0	0	0	365
Form 2	0	0	0	0	0	0	0	33	270	35	3	1	1	0	0	0	0	343
Form 3	0	0	0	0	0	0	0	0	18	210	45	1	0	0	0	0	0	274
Form 4	0	0	0	0	0	0	0	0	0	26	172	21	0	0	0	0	0	219
Form 5C	0	0	0	0	0	0	0	0	0	4	35	140	32	4	1	0	0	216
Form 5N	0	0	0	0	0	0	0	0	0	0	15	51	79	32	1	0	0	178
Form 6	0	0	0	0	0	0	0	0	0	0	1	7	26	30	9	1	0	74
Form 7	0	0	0	0	0	0	0	0	0	0	0	0	10	16	7	2	0	35
Total	507	459	365	400	352	371	381	340	345	285	271	221	148	82	18	3	0	4548
Female																		
Grade/Form	4	5	6	7	8	9	10	11	12	13	14	15	16	17	18	19+	Total	
Presch	201	13																214
Grade 1	38	184	14															236
Grade 2		20	154	16	4													194
Grade 3			13	168	13	1												195
Grade 4				16	136	19	3											174
Grade 5					14	121	14			1								150
Grade 6						30	129	16	2									177
Form 1							28	114	22	3								167
Form 2								20	123	14	2	1	1					161
Form 3									10	106	20							136
Form 4										17	92	9						118
Form 5C										2	23	78	14	1	1			119
Form 5N											11	31	49	18				109
Form 6												5	14	9	4			32
Form 7													8	7	5			20
Total	239	217	181	200	167	171	174	150	157	143	148	124	86	35	10	0	0	2202
Male																		
Grade/Form	4	5	6	7	8	9	10	11	12	13	14	15	16	17	18	19+	Total	
Presch	230	21																251
Grade 1	38	209	30		1													278
Grade 2		12	140	17	2	1												172
Grade 3			14	175	20	2												211
Grade 4				8	149	33	5	1										196
Grade 5					13	151	34	5										203
Grade 6						13	151	25	3	1								193
Form 1							17	146	30	5								198
Form 2								13	147	21	1							182
Form 3									8	104	25	1						138
Form 4										9	80	12						101
Form 5C										2	12	62	18	3				97
Form 5N											4	20	30	14	1			69
Form 6											1	2	12	21	5	1	0	42
Form 7													2	9	2	2	0	15
Total	268	242	184	200	185	200	207	190	188	142	123	97	62	47	8	3	0	2346

1997 ENROLMENT RATIOS

Age	Population	Enrolment	% enrolment	Not enrolled
3.5	230	154	67%	76
4	467	488	104%	-21
5	446	439	98%	7
6	449	365	81%	84
7	464	400	86%	64
8	417	352	84%	65
9	413	371	90%	42
10	394	381	97%	13
11	363	340	94%	23
12	371	345	93%	26
13	368	285	77%	83
14	387	271	70%	116
15	370	221	60%	149
16	338	148	44%	190
17	331	82	25%	249
18	312	18	6%	294
19	290	3	1%	287

Preschool	Population	Enrolment	% enrolment
Age 3.5 - 4	697	642	92%

Primary Ages	Population	Enrolment	% enrolment
Ages 5 - 10	2583	2308	89%

Secondary Ages	Population	Enrolment	% enrolment
Ages 11 - 17	2528	1692	67%

Compulsory	Population	Enrolment	% enrolment
Ages 5 - 15	3996	3331	83%

Overall	Population	Enrolment	% enrolment
Ages 3.5 - 17	5808	4642	80%

Source : Cook Islands Age Group Population data derived from the Census of Population and Dwellings, 1 December **1996**, Statistics Office, Rarotonga.

Enrolment data is derived from the 1 March **1997** EMIS. Students' ages are recorded as of 1 January 1997.

STUDENT ACHIEVEMENT

FORM 7 EXAMINATION RESULTS 1994 - 1999

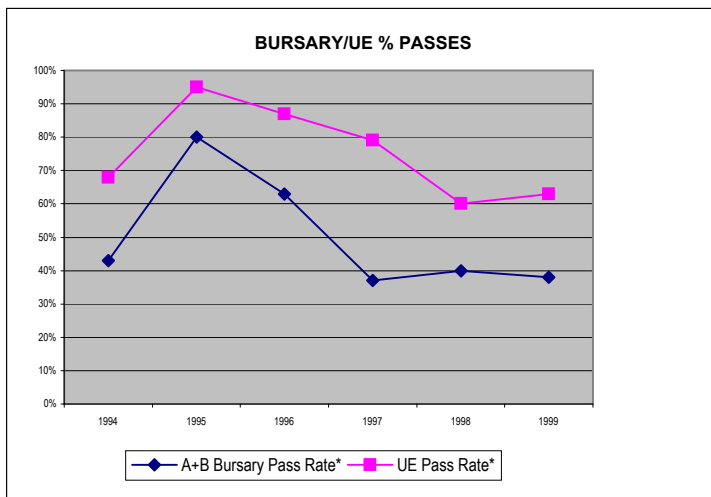
	1994	1995	1996	1997	1998	1999
Scholarship Marks	2	0	1	2	0	2
A Bursary Passes	4	7	3	2	1	5
B Bursary Passes	8	9	16	5	7	7
A+B Bursary	12	16	19	7	8	12
University Entrance Passes	19	19	26	15	12	20
Pupils (Total)	28	20	30	21	23	34
Pupils taking 1-3 subjects	0	0	0	2	3	1
Pupils taking 5 subjects	28	20	30	19	20	32
A+B Bursary Pass Rate*	43%	80%	63%	37%	40%	38%
UE Pass Rate*	68%	95%	87%	79%	60%	63%

Source: NZQA spreadsheets

Notes:

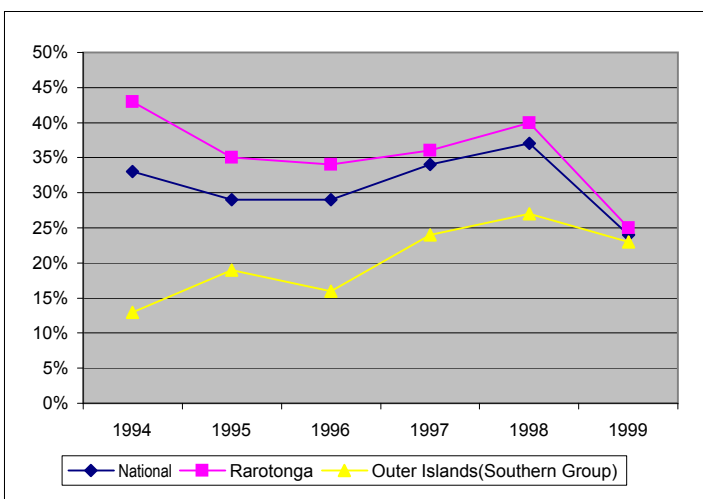
- * Percentages calculated per pupils taking 5 subjects
- 1-3 pupils in other schools also sit each year but in only 1-3 subjects

Based on preliminary results (excluding recounts and remarking) the percentage results in UE/UB/US exams are similar to those achieved in 1998. However the actual number of Tereora students gaining Bursary and Entrance to University was significantly higher than in 1997 and 1998 and was on par with 1994. Twelve students were awarded bursary (5 A's and 7 B's) and 20 students gained Entrance to University. Two students also gained University Scholarship (US) grades in Mathematics – Statistics.



NEW ZEALAND SCHOOL CERTIFICATE RESULTS 1994 -1999

NZSC Pass Rates	1994	1995	1996	1997	1998	1999
National	33%	29%	29%	34%	37%	24%
Rarotonga	43%	35%	34%	36%	40%	25%
Outer Islands(Southern Group)	13%	19%	16%	24%	27%	23%



The 1999 NZSC results are the worst on record since analysis began in 1994. Cook Islands students sat 723 papers (excluding NZ Maori) and achieved marks of 50% or higher in only 176 papers, a 24% "pass" rate. From 1995 the number of "passes" averaged 265 papers. The biggest drop in standards in 1999 occurred in Rarotonga schools.

In previous years Rarotonga students performed significantly better than their outer island colleagues but this was not the case in 1999. There is a need to seriously analyse the results for 1999, to identify weaknesses in the system and to implement programs to ensure that improvements in student performance are achieved in 2000 and in future years.