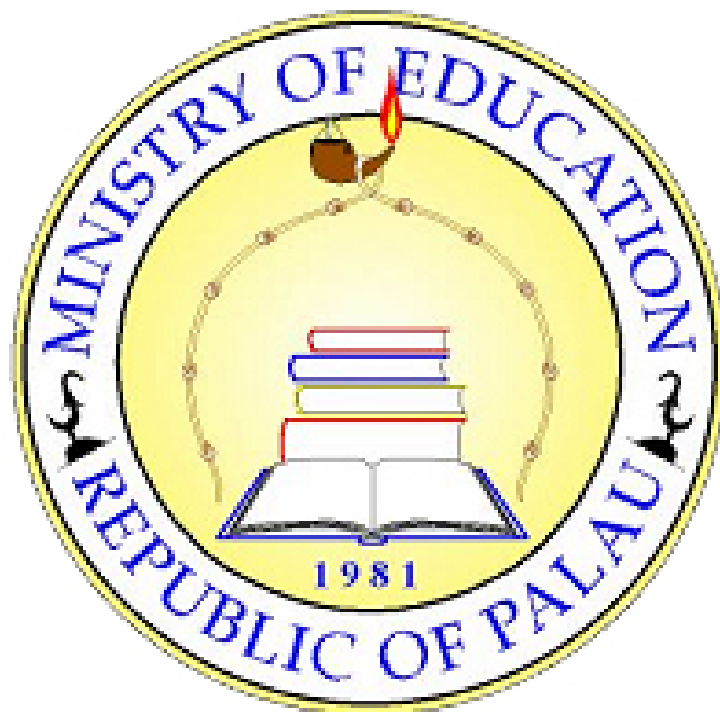


Ministry of Education

2011 Statistical Yearbook



Division of Research & Evaluation
P.O. Box 7080
Koror, Palau 96940

Published March 2012

Acknowledgements

This publication was made possible through the support of many people within the education sector. A special acknowledgement goes to the school principals for actively participating in the Annual School Survey conducted, the Division of Personnel Management and Administrative Services Section for assistance in collection of other data within the ministry. Finally, the staffs of the Division of Research and Evaluation are commended for compilation of this publication.

Introduction

The Education Statistical Yearbook 2006 is an annual publication of the Ministry of Education. It provides a range of statistical information about education in the Republic of Palau and serves as a reference for school officials and others responsible for planning and implementing activities concerning education and the development of our youth. The statistical information contained in this publication is comprised of data collected with the Annual School Survey conducted in July 2006 and data from other sources within the Ministry of Education.

This publication's layout begins with a summary of all the schools in the Republic of Palau. The following shows how the publication is organized.

- ☛ School Information
- ☛ Students' Information
- ☛ Personnel Information
- ☛ Facilities & Equipments
- ☛ Finance

Definition of Terms

Acronyms	Terms Definition
BMS	Belau Modekngai School
Dropout	This refers to any student who leaves school for a period of 15 consecutive school days without request of a transcript or withdrawal request from parents. Students who drop out of school do not return to school within the same school year that they left school.
MOE	Ministry of Education
PHS	Palau High School
PMA	Palau Mission Academy
Repeater	This refers to any student who repeats the same grade level more than one given school year.
ROP	Republic of Palau
SDA	Seventh Day Adventist
JFK	John F. Kennedy (Kayangel Elem. School)
Transfer In	This refers to any student who enters another school within MOE's school system. Students could be coming in from another school within MOE's school system, outside of MOE's school system, or another island or country.
Transfer Out	This refers to any student who exits current school within MOE's school system within a given school year.
Withdrawal	This refers to any student whose parents and/or guardian presented the school with an official document requesting that their child be withdrawn from the school for any given school year.

Table of Contents

SCHOOL INFORMATION

Table 1: List of Schools (Public & Private)	1
Figure 1: School Distribution by Region	1

STUDENT INFORMATION

Enrollment

Table 2: Elementary Enrollment by School, Grade, & Gender (Public & Private)	2
Table 3: High School Enrollment by School, Grade (Public & Private)	3
Table 4a: Elementary Enrollment by Age, Grade, & Gender (Public & Private)	4
Table 4b: High School Enrollment by Age, Grade & Gender (Public & Private)	4
Table 5: Enrollment by School Name & Gender (Public & Private)	5
Figure 2: Elementary Enrollment Distribution (Public & Private)	6
Figure 3: High School Enrollment Distribution (Public & Private)	6
Figure 4: Enrollment by Region & School Type	7

Enrollment Trend

Table 6: Enrollment Trend by School Level (Public & Private)	7
--	---

Student Ratio

Table 7: Male/Female Ratio by Grade (Public Schools)	8
Table 8: Male/Female Ratio by Grade (Private Schools)	8

Dropout

Table 9: Dropout and Percentage by Grade (Public & Private)	9
Table 10: Number of Dropout by Grade & Gender (Public & Private)	9

Withdrawal

Table 11: Withdrawals and Percentage by Grade (Public & Private)	10
Table 12: Number of Withdrawals by Grade & Gender (Public & Private)	10

Repeaters

Table 13: Repeaters and Percentage by Grade (Public & Private)	11
Figure 5: Percentage of Repeaters by Grade (Public & Private)	11
Table 14: Number of Repeaters by Grade & Gender (Public & Private)	12

Transfers

Table 15: Students Transfers by Grade (Public & Private)	12
Figure 6: Number of Student Transfers (Public & Private)	13

Graduates Trend

Table 16: Graduate and Percentage Trend by School Level	13
---	----

PERSONNEL

Table 17: School Personnel by Position & School Level (Public & Private)	14
Table 18: Teachers' Education Level by Gender (Public Schools)	14
Table 19: Teachers' Education Level by Gender (Private Schools)	15
Table 20: Teacher/Student Ratio by School Level (Public & Private)	15
Table 21: Teacher/Student Ratio by School (Public & Private)	16
Table 22: Personnel Positions by Gender (Public & Private)	17
Table 23 (A-J): Personnel Positions by School & Gender (Public Schools)	18
Table 23 (K-S): Personnel Positions by School (Public Schools)	19
Table 24 (A-G): Personnel Positions by School & Gender (Private Schools)	20
Table 25: Retirees Projection by Position & Year (Public Schools)	21

Table of Contents

FACILITIES

Instructional Facilities

Table 26: Instructional Facilities by School (Public Schools) 22

Table 27: Instructional Facilities by School (Private Schools) 22

Other Facilities

Table 28: Other Facilities by School (Public Schools) 23

Table 29: Other Facilities by School (Private Schools) 23

Furniture

Table 30: Furniture by School (Public Schools) 24

Table 31: Furniture by School (Private Schools) 24

Equipment

Table 32(A-B): Equipment by School (Public Schools) 25

Table 33(A-B): Equipment by School (Private Schools) 26

Table 34: Student/Computer Ratio by School Level (Public & Private) 27

Table 35a: Student/Computer Ratio by School (Public Schools) 27

Table 35a: Student/Computer Ratio by School (Private Schools) 28

FINANCE

Table 35: General Fund Budget 29

Table 36: Federal Programs Budget 29

SCHOOL INFORMATION:

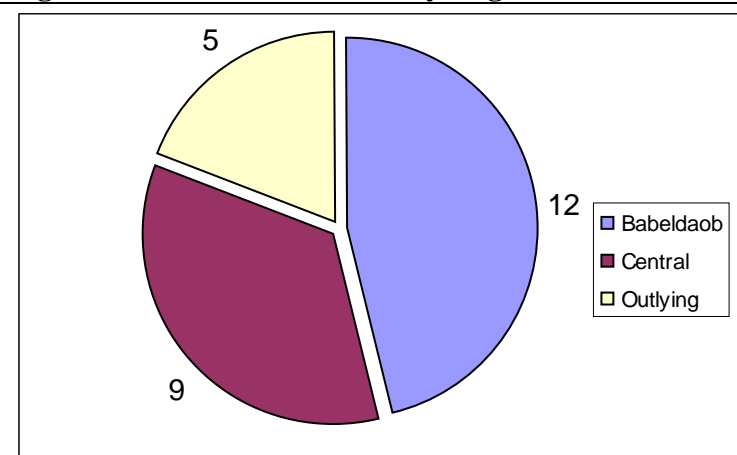
Table 1: List of Schools by School (Public & Private)

		School Name
Public	1	Aimeliik Elementary School
	2	Airai Elementary School
	3	Angaur Elementary School
	4	George B. Harris Elementary School
	5	Ibobang Elementary School
	6	JFK Elementary School
	7	Koror Elementary School
	8	Melekeok Elementary School
	9	Meyuns Elementary School
	10	Ngaraard Elementary School
	11	Ngarchelong Elementary School
	12	Ngardmau Elementary School
	13	Ngchesar Elementary School
	14	Ngeremlengui Elementary School
	15	Ngiwal Elementary School
	16	Palau High School
	17	Peleliu Elementary School
	18	Pulo Anna Elementary School
	19	Sonsorol Elementary School
Private	20	Belau Modekngai School
	21	Bethania High School
	22	Emmaus High School
	23	Maris Stella Elementary School
	24	Mindszenty High School
	25	Palau Mission Academy
	26	Seventh Day Adventist Elementary School

Source: 2011 Annual School Survey

Table 1 shows the number of schools in Palau by school type and school level. There are twenty-six schools altogether. Of the total schools, nineteen are public schools while the remaining seven are private schools. The public schools include eighteen elementary schools and one high school, while private schools include two elementary schools and five high schools.

Figure 1: School Distribution by Region



As shown in Figure 1, Babeldaob has the most number of schools with 11; 9 public elementary schools and 2 private high schools. Central region (includes Airai State) has 10 schools; 4 public elementary schools, 2 private elementary schools, 1 public high school, and 3 private high schools. The remaining 5 schools, all public elementary schools, are located in the outlying states.

STUDENT INFORMATION:

Enrollment

Table 2: Elementary Enrollment by School, Grade & Gender (Public & Private)

School Type	School Name	Grade Level																Total
		1		2		3		4		5		6		7		8		
		M	F	M	F	M	F	M	F	M	F	M	F	M	F	M	F	
Public	Aimeliik	6	4	3	5	6	3	4	3	3	3	6	3	6	1	2	5	63
	Airai	10	7	10	13	6	9	11	5	5	8	6	10	12	9	18	10	149
	Angaur	2	0	1	1	2	2	0	3	3	3	3	0	6	1	1	0	28
	George B. Harris	30	12	26	19	26	17	26	15	29	15	26	23	28	19	22	24	357
	Ibobang	0	0	2	1	0	0	0	1	2	0	2	0	1	2	2	2	15
	JFK (Kayangel)	0	1	0	0	1	0	1	1	1	2	0	0	1	0	1	1	10
	Koror	38	40	54	41	41	29	34	33	29	34	30	32	34	31	30	38	568
	Melekeok	5	1	1	2	4	1	1	4	4	3	2	2	4	5	1	4	44
	Meyuns	10	9	16	6	10	9	11	4	16	6	11	14	11	10	13	8	164
	Ngaraard	2	1	5	6	2	4	1	2	4	3	3	5	3	4	2	3	50
	Ngarchelong	4	3	5	6	5	2	7	5	6	3	5	3	6	5	7	4	76
	Ngardmau	0	2	0	0	0	2	3	2	0	2	0	1	0	0	4	4	20
	Ngchesar	3	0	4	2	2	1	1	8	1	1	4	5	5	1	3	2	43
	Ngeremlengui	5	4	4	3	2	2	4	4	4	2	4	4	4	2	1	8	57
	Ngiwal	4	3	1	1	0	1	4	4	4	1	0	3	3	2	5	0	36
	Peleliu	5	9	7	4	2	5	6	6	2	6	5	4	5	7	4	6	83
	Pulo Anna	0	0	1	0	0	1	1	0	0	1	0	0	0	1	0	0	5
	Sonsorol	0	1	0	1	0	0	1	0	0	1	0	0	0	1	1	0	6
Public Total		124	97	140	111	109	88	116	100	113	94	107	109	129	101	117	119	1774
Private	Maris Stella	18	17	16	19	14	15	17	12	14	14	19	14	22	15	13	17	256
	Seven Day Adventist	15	15	22	20	10	13	11	12	19	14	12	4	17	12	13	17	226
Private Total		33	32	38	39	24	28	28	24	33	28	31	18	39	27	26	34	482

Source: 2011 Annual School Survey (End of Year Data)

Table 2 shows a total enrollment of 2,842 students of public and private elementary schools. Of the total elementary enrollment, 79.5% are enrolled in public schools. Looking at enrollment by schools, Koror has the highest enrollment of 696 students, followed by George B. Harris at 520, and Maris Stella at 313. Schools with the lowest enrollment include Pulo Ana with 7 students,onsorol with 10 and JFK with 15.

Table 3: High School Enrollment by School, Grade & Gender (Public & Private)

		Grade Level								Total
		9		10		11		12		
School Type	SchName	M	F	M	F	M	F	M	F	
Public	Palau High School	94	88	112	105	88	89	78	92	746
Public Total		94	88	112	105	88	89	78	92	746
Private	Belau Modekngai School	7	2	2	1	12	2	10	5	41
	Bethania	0	17	0	16	0	14	0	20	67
	Emmaus	15	0	23	0	21	0	14	0	73
	Mindszenty	21	30	21	27	22	23	20	25	189
	Palau Mission Academy	14	18	20	21	20	21	19	15	148
Private Total		57	67	66	65	75	60	63	65	518
Gender Total		151	155	178	170	163	149	141	157	1264
Grand Total		306		348		312		298		1264

Source: 2011 Annual School Survey

Table 3 shows a total enrollment of 1,283 for both public and private high schools by grade levels in school year 2005-2006. Of the total high school enrollment, 63.2% are enrolled in public schools. Looking at enrollment by schools, PHS has the highest enrollment of 811 students, followed by Mindszenty at 209. Schools with the lowest enrollment include BMS at 32 and Emmaus at 52.

Of the total enrollment of 4,125 students, public schools had higher enrollment of 74.4% compared to 25.6% for private schools. By school level enrollment, 68.9% were enrolled in the elementary schools while the remaining 31.1% were enrolled in the secondary schools.

Enrollment by grade level shows elementary schools enrollment range between 289 and 415 with grade 7 having the highest and grade 1 having the lowest. The enrollment in the high school level indicate a steady decrease as students progress through the grade levels beginning with grade 9 having the highest enrollment of 410 students and ending with grade 12 having the least enrollment of approximately 62% of grade 9 enrollment.

Table 4: Enrollment by Age, Grade, and Gender

Table 4a: Elementary Enrollment by Age, Grade and Gender (Public & Private)

Age	Grade Level																Total
	1		2		3		4		5		6		7		8		
	M	F	M	F	M	F	M	F	M	F	M	F	M	F	M	F	
Below 6	1	2															3
6	85	81	2	1													169
7	60	38	81	81	1	3											264
8	11	8	64	48	47	51	1										230
9			26	16	58	47	48	57	1	2							255
10			5	2	20	13	68	58	40	74		1					281
11				2	5	2	19	5	57	34	43	47	1	3		1	219
12					2		4	3	35	10	62	59	49	53	1	4	282
13							3		10	1	22	10	61	53	53	87	300
14							1		3	1	7	5	33	15	60	45	170
15								1			2	3	15	3	22	12	58
16											1	2	7	1	5	4	20
17											1		2		2		5
Gender Total	157	129	178	150	133	116	144	124	146	122	138	127	168	128	143	153	2256
Grade Total	286		328		249		268		268		265		296		296		2256

Source: 2011 Annual School Survey

Table 4b: High School Enrollment by Age, Grade and Gender (Public & Private)

Age	Grade Level								Total
	9		10		11		12		
	M	F	M	F	M	F	M	F	
13	2								2
14	20	39	1	2					62
15	69	73	18	23	1	1			185
16	36	31	70	83	32	30	1	1	284
17	16	8	47	49	59	72	26	28	305
18	7	2	22	11	42	34	68	89	275
19	1	2	13	1	20	8	24	23	92
20			5		4	2	11	7	29
21					1	1	3	3	8
Over 18			2	1	4	1	5	6	19
Over 21							3		3
Gender Total	151	155	178	170	163	149	141	157	1264
Grade Total	306		348		312		298		1264

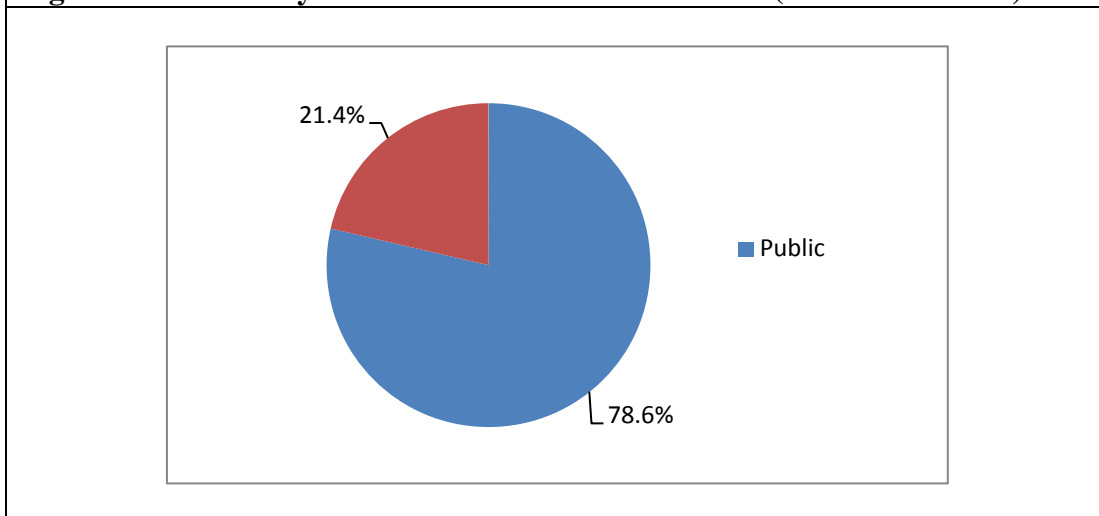
Source: 2011 Annual School Survey

Table 5: Enrollment by School and Gender (Public & Private)

School Type	School Name	M	F	Total
Public	Aimeliik	36	27	63
	Airai	78	71	149
	Angaur	18	10	28
	George B. Harris	213	144	357
	Ibobang	9	6	15
	John F. Kennedy	5	5	10
	Koror	290	278	568
	Melekeok	22	22	44
	Meyuns	98	66	164
	Ngaraard	22	28	50
	Ngarchelong	45	31	76
	Ngardmau	7	13	20
	Ngchesar	23	20	43
	Ngeremlengui	28	29	57
	Ngiwal	21	15	36
	Palau High School	372	374	746
	Peleliu	36	47	83
	Pulo-Anna	2	3	5
	Sonsorol	2	4	6
	Public Total		1327	1193
Private	Belau Modekngai	31	10	41
	Bethania	0	67	67
	Emmaus	73	0	73
	Maris Stella	133	123	256
	Mindszenty	84	105	189
	Palau Mission Academy	73	75	148
	Seven Day Adventist	119	107	226
Private Total		513	487	1000
Grand Total		1840	1680	3520

Source: 2011 Annual School Survey

Figure 2: Elementary Schools Enrollment Distribution (Public & Private)

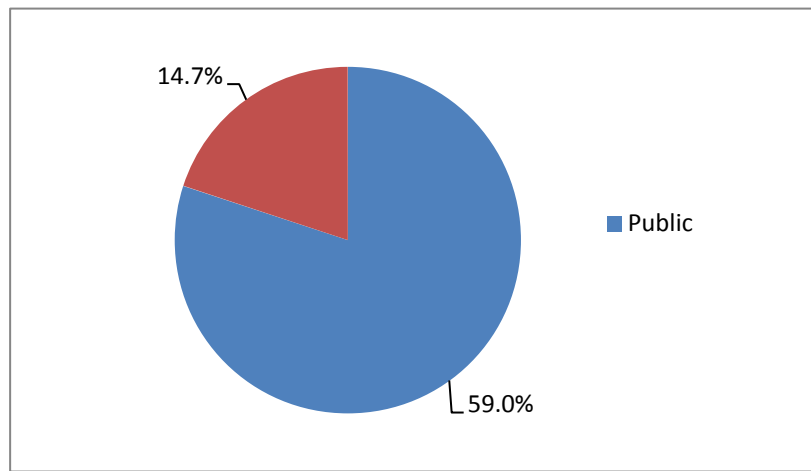


Source: 2011 Annual School Survey

As shown in Figure 2, one in every three students is enrolled in the private elementary schools. A higher proportion of students are enrolled in public elementary schools due to

enrollment in private schools being limited only to those who can afford tuition and other school fees.

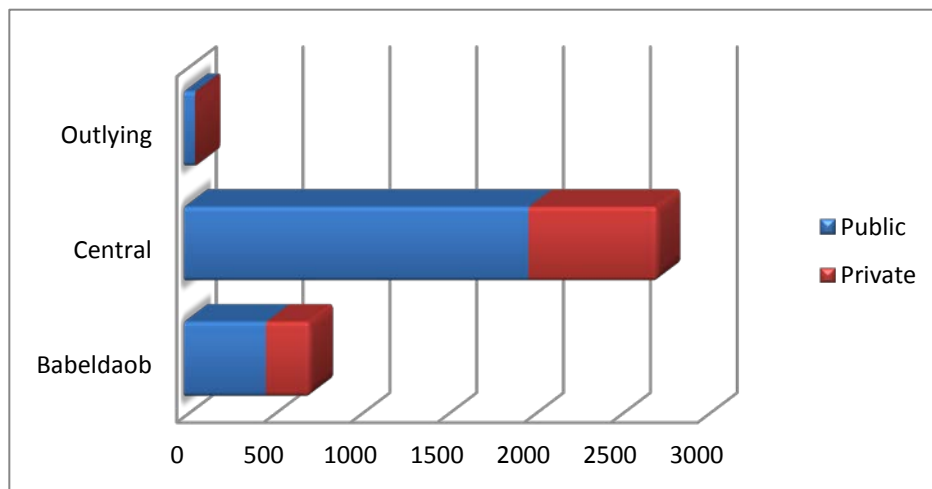
Figure 3: High Schools Enrollment Distribution (Public & Private)



Source: 2011 Annual School Survey

As shown in Figure 3, about two thirds of high school students are enrolled in public schools. Tuition and other school fees required in private schools limit enrollment to those who can afford such costs.

Figure 4: Enrollment by Region (Public & Private)



Source: 2011 Annual School Survey

Figure 4 shows the distribution of student enrollment by region. Central region, being the most populated, has the largest number of students 3,108. Babeldaob region has 20.5% of students. Outlying states have the least number of students, all in public schools.

➤ Enrollment Trend

Table 6: Enrollment Trend by School Level & Gender (Public & Private)

School Type	School Year	M	F	Elem.Total	M	F	HS Total	Grand Total
Public	1997-1998	1224	1095	2319	373	350	723	3042
	1998-1999	1284	1114	2398	380	371	751	3149
	1999-2000	1259	1128	2387	368	343	711	3098
	2000-2001	1264	1150	2414	371	366	737	3151
	2001-2002	1301	1180	2481	340	356	696	3177
	2002-2003	1305	1158	2463	388	403	791	3254
	2003-2004	1272	1160	2432	408	391	799	3231
	2004-2005	1261	1121	2382	360	419	779	3161
	2005-2006	1177	1083	2260	398	413	811	3071
	2006-2007	1134	1001	2135	407	403	810	2945
	2007-2008	1115	948	2063	433	418	851	2914
	2008-2009	1035	919	1954	441	409	850	2804
	2009-2010	953	859	1812	390	394	784	2596
2010-2011	962	824	1786	369	373	742	2528	
Private	1997-1998	255	264	519	192	206	398	917
	1998-1999	289	285	574	200	212	412	986
	1999-2000	267	258	525	213	228	441	966
	2000-2001	292	293	585	217	225	442	1027
	2001-2002	314	297	611	226	246	472	1083
	2002-2003	317	332	649	221	216	437	1086
	2003-2004	326	325	651	207	215	422	1073
	2004-2005	308	304	612	178	244	422	1034
	2005-2006	288	294	582	201	271	472	1054
	2006-2007	267	281	548	233	266	499	1047
	2007-2008	274	247	521	263	265	528	1049
	2008-2009	247	253	500	258	266	524	1024
	2009-2010	245	247	492	267	261	528	1020
2010-2011	246	226	472	256	256	512	984	

Source: Division of Research and Evaluation, Ministry of Education

Note: Enrollment data on table 6 are based on the beginning enrollment of a school year and might differ from the end of school results.

Table 6 shows enrollment trend from school years 1997-1998 to 2005-2006. Overall, there is increase of enrollment by 4% between school years 1997-1998 and 2005-2006.

➤ Male/Female Ratio

Table 7: Male/Female Ratio by Grade (Public)

Grade	M	F	M/F Ratio
1	124	97	127.8
2	140	111	126.1
3	109	88	123.9
4	116	100	116.0
5	113	94	120.2
6	107	109	98.2
7	129	101	127.7
8	117	119	98.3
9	94	88	106.8
10	112	105	106.7
11	88	89	98.9
12	78	92	84.8
Total	1327	1193	111.2

Source: 2011 Annual School Survey

Table 8: Male/Female Ratio by Grade (Private)

Grade	M	F	M/F Ratio
1	33	32	103.1
2	38	39	97.4
3	24	28	85.7
4	28	24	116.7
5	33	28	117.9
6	31	18	172.2
7	39	27	144.4
8	26	34	76.5
9	57	67	85.1
10	66	65	101.5
11	75	60	125.0
12	63	65	96.9
Total	513	487	105.3

Note: The **M/F Ratio column**, states that for every 100 female there are x number of males in each given grade level.

In the public schools, as shown in table 7 above, the male/female ratio in the elementary level (grades 1-8) generally indicate more male than female students (except for grade 1), with grade 2 having the highest ratio of 133 and grade 5 having the lowest of 101. At the high school level (grades 9-12), grades 9 and 12 shows more female students. In grades 10 and 11, the female outnumbered the male students. For the private high schools (grades 9-12), as shown in table 8, the male/female ratio varies.

➤ Drop Out

Table 9: Drop out and Percentage by Grade (Public & Private)

Grade	Dropout					Percentage of Enrollment		
	Pub_Enroll.	Public	Priv_Enroll.	Private	Total	Public	Private	Total
1	221	2	65	0	2	0.9	0.0	0.7
2	251	0	77	0	0	0.0	0.0	0.0
3	197	0	52	0	0	0.0	0.0	0.0
4	216	0	52	0	0	0.0	0.0	0.0
5	207	1	61	0	1	0.5	0.0	0.4
6	216	0	49	0	0	0.0	0.0	0.0
7	230	1	66	1	2	0.4	1.5	0.7
8	236	1	60	0	1	0.4	0.0	0.3
9	182	8	124	2	10	4.4	1.6	3.3
10	217	2	131	3	5	0.9	2.3	1.4
11	177	3	135	2	5	1.7	1.5	1.6
12	170	1	128	0	1	0.6	0.0	0.3
Total	2520	19	1000	8	27	0.8	0.8	0.8

Source: 2011 School Survey

Table 9 shows drop out students by grade level in both public and private schools. When comparing public and private schools, there is considerably more drop out students in public schools than private schools. As a percentage of the total student enrollment, drop out rate amounts to 1.4 percent for SY 05-06. By grade levels, the top 3 grades with highest drop out rates were grades 9, 10 and 11 respectively.

Table 10: Number of *Drop out by Grade and Gender (Public & Private)

Grade	M	F	Total
1	2	0	2
2	0	0	0
3	0	0	0
4	0	0	0
5	1	0	1
6	0	0	0
7	2	0	2
8	1	0	1
9	6	4	10
10	4	1	5
11	5	0	5
12	1	0	1
Total	22	5	27

Source: 2011 Annual School Survey

As shown in Table 10, more males than females are dropping out of school. Incidences increase more in the high school when comparing elementary and high school levels. Of the 57 drop out students, 61.4% of them are high schools students while the remaining 38.6% are elementary schools students.

***Drop out** refers to all students who leave school for a period of 15 consecutive school days without request for a transcript or withdrawal request from parents.

➤ **Withdrawal**

Table 11: Withdrawals by Grade (Public & Private)

Grade	Withdrawals					Percentage of Enrollment		
	Pub_Enroll.	Public	Priv_Enroll.	Private	Total	Public	Private	Total
1	221	6	65	0	6	2.7	0.0	2.1
2	251	2	77	0	2	0.8	0.0	0.6
3	197	3	52	0	3	1.5	0.0	1.2
4	216	1	52	0	1	0.5	0.0	0.4
5	207	0	61	0	0	0.0	0.0	0.0
6	216	0	49	0	0	0.0	0.0	0.0
7	230	1	66	0	1	0.4	0.0	0.3
8	236	1	60	0	1	0.4	0.0	0.3
9	182	20	124	0	20	11.0	0.0	6.5
10	217	20	131	0	20	9.2	0.0	5.7
11	177	12	135	1	13	6.8	0.7	4.2
12	170	5	128	0	5	2.9	0.0	1.7
Total	2520	71	1000	1	72	2.8	0.1	2.0

Source: 2011 Annual School Survey

As shown in Table 11, more students in public schools withdraw from school compared to private schools. As a percentage of the total student enrollment in the public schools, student withdrawals amount to 1.2%. When comparing grade level withdrawal rates, grade 9 has the highest rate of 3.9%, followed by grade 10 with 2.7%. For public schools, grade 9 has the highest of 5.8% followed by grade 10 with 4.1%.

Table 12: Number of Withdrawals by Grade and Gender (Public & Private)

Grade	M	F	Total
1	3	3	6
2	1	1	2
3	2	1	3
4	1	0	1
5	0	0	0
6	0	0	0
7	1	0	1
8	1	0	1
9	12	8	20
10	15	5	20
11	11	2	13
12	4	1	5
Total	51	21	72

Source: 2011 Annual School Survey

Withdrawal refers to any student who leaves school and stays out of school for the rest of each given school year after a parent/guardian submit official withdrawal request.

As shown in Table 12, more males than females withdraw from school. When comparing grade levels, withdrawal occurs more in grades 1 and 4 for elementary and grades 9 and 10 for high school.

➤ Repeaters

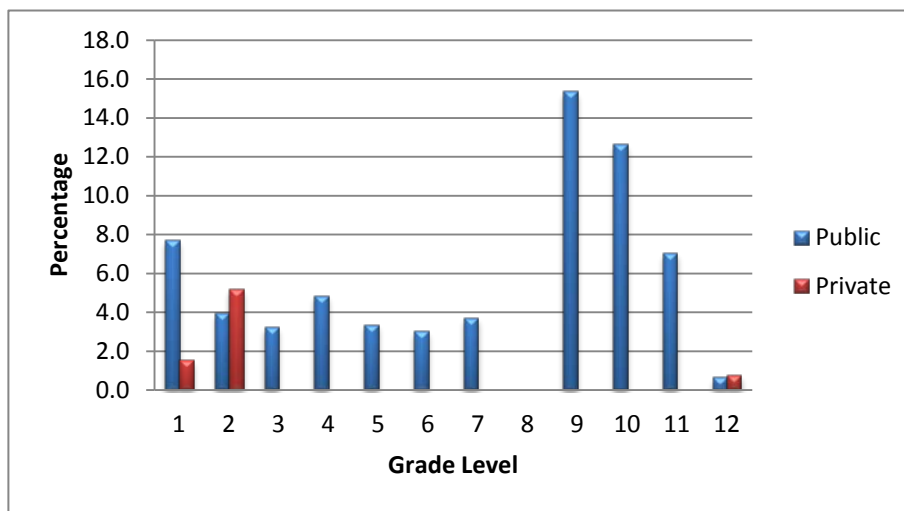
Table 13: Repeaters and Percentage by Grade (Public & Private)

Grade	Repeaters					Percentage of Enrollment		
	Pub_Enroll.	Public	Priv_Enroll.	Private	Total	Public	Private	Total
1	221	22	65	1	23	10.0	1.5	8.0
2	251	13	77	4	17	5.2	5.2	5.2
3	197	8	52	0	8	4.1	0.0	3.2
4	216	13	52	0	13	6.0	0.0	4.9
5	207	9	61	0	9	4.3	0.0	3.4
6	216	8	49	0	8	3.7	0.0	3.0
7	230	11	66	0	11	4.8	0.0	3.7
8	236	0	60	0	0	0.0	0.0	0.0
9	182	47	124	0	47	25.8	0.0	15.4
10	217	44	131	0	44	20.3	0.0	12.6
11	177	22	135	0	22	12.4	0.0	7.1
12	170	2	128	1	3	1.2	0.8	1.0
Total	2520	199	1000	6	205	7.9	0.6	5.8

Source: 2011 Annual School Survey

As indicated in Table 13, there are more students repeating grades in public schools than those in private schools. In the elementary, grades 1 and 4 had the highest rate of repeaters. In the high school level, grade 9 has the highest rate of repeaters, followed by grade 10. As a percentage of the total student enrollment, student repeaters amount to 5.6%.

Figure 5: Percentage of repeaters by grade level enrollment (Public & Private)



Source: 2011 Annual School Survey

* **Repeater** refers to any student who at the end of a given school year repeats the same grade level for the next school year.

Table 14: Number of Repeaters by Grade and Gender (Public & Private)

Grade	M	F	Total
1	18	5	23
2	9	8	17
3	6	2	8
4	10	3	13
5	8	1	9
6	6	2	8
7	8	3	11
8	0	0	0
9	29	18	47
10	28	16	44
11	17	5	22
12	3	0	3
Total	142	63	205

Source: 2011 Annual School Survey

Table 14 shows the number of repeaters by gender. Of the 231 repeaters, 64.5% of them were male and the remaining 35.5% were female.

➤ Transfers

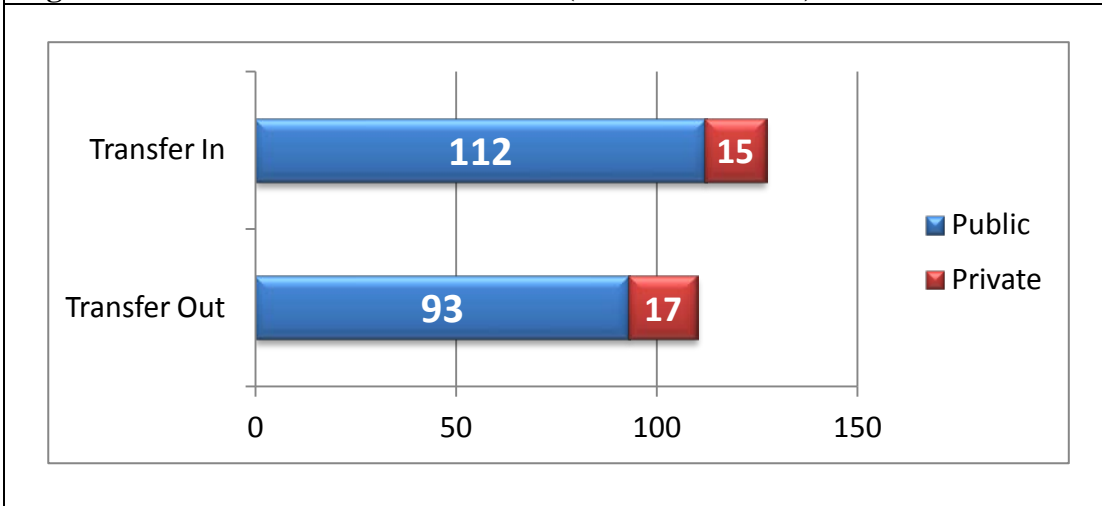
Table 15: Student Transfers by Grade (Public & Private)

Grade	Public		Private	
	In	Out	In	Out
1	1	9	0	2
2	18	14	2	3
3	12	12	0	0
4	15	12	1	3
5	14	14	1	1
6	12	5	0	1
7	15	14	2	0
8	5	8	0	1
9	3	1	3	1
10	7	0	3	4
11	4	2	3	1
12	6	2	0	0
Total	112	93	15	17

Source: 2011 Annual School Survey

As shown in Table 15, public schools experience more transfer student than private schools. It appears that students who transfer out of schools are more than those who transfer in. This could mean more students are transferring to foreign schools. When comparing grade levels, the highest number of student transfer occurs in grade 2, and is closely followed by grade 7 and 4 respectively.

Figure 6: Number of Student Transfers (Public & Private)



Source: 2011 Annual School Survey

The large difference between **Transfers In** and **Transfers Out** could be a result of students transferring to foreign schools.

➤ Graduate Trend

Table 16: Graduate and Percentage Trend by School Level

School Year	8th Grade Enrollment		Graduates		Percentage	
	M	F	M	F	M	F
2006-2007	202	191	184	175	91.1%	91.6%
2007-2008	197	152	162	159	82.2%	104.6%
2008-2009	176	177	150	180	85.2%	101.7%
2009-2010	140	151	144	145	102.9%	96.0%
2010-2011	142	154	138	149	97.2%	96.8%
Total	857	825	778	808	90.8%	97.9%

Source: Division of Research & Evaluation

School Year	12th Grade Enrollment		Graduates		Percentage	
	M	F	M	F	M	F
2006-2007	95	142	101	137	106.3%	96.5%
2007-2008	128	132	129	123	100.8%	93.2%
2008-2009	137	145	126	133	92.0%	91.7%
2009-2010	120	160	113	146	94.2%	91.3%
2010-2011	143	157	138	156	96.5%	99.4%
Total	623	736	607	695	97.4%	94.4%

Source: Division of Research & Evaluation

Note: Beginning of school enrollments were used on table 16, Graduate numbers could be bigger than the starting enrollment.

* **Graduates** include both Public & Private Schools students where as previous years' graduates only accounted for public school graduates.

** **Percentage** represents all 8th & 12th graders enrolled who graduated for each given school year.

PERSONNEL:

➤ School Personnel

Table 17: School Personnel by Position (Public & Private)

Position	Public			Private			Grand Total
	Elementary	High School	Total	Elementary	High School	Total	
Counselor	0	5	5	0	1	1	6
Principal	16	1	17	1	4	5	22
Support Staff	74	13	87	9	45	54	141
Teacher	174	67	241	45	46	91	332
Vice Principal	2	1	3	2	4	6	9
Grand Total	266	87	353	57	100	157	510

Source: 2011 Annual School Survey

As shown in Table 17, teachers make up 67.1% of the total employees in the school system. Of the 342 teachers, 72.8% of them are employed in the public schools, while the remaining 27.2% work in the private schools.

Table 18: Teachers' Education Level by Gender (Public Schools)

School Level	Highest Education	M	F	Grand Total
Elementary	High School	12	57	69
	Associates Degree	17	62	79
	Bachelor Degree	4	8	12
	Masters Degree	1	6	7
	Not Stated	2	5	7
Elementary Total		36	138	174
High School	High School	4	1	5
	Associates Degree	8	15	23
	Bachelor Degree	11	20	31
	Masters Degree	0	6	6
	Not Stated	2	0	2
High School Total		25	42	67
Grand Total		61	180	241

Source: 2011 Annual School Survey

Table 18 shows Teachers' highest education attained by gender for all public schools. Overall, male make up 75.1% of all teachers while female takes the remaining 24.9%. In the elementary schools, about 47.1% of the teachers have only high school diploma, followed by 37.7% with AA/AS degree, and 11% with BA/BS degree. Of all the high school teachers, about 48.3% have BA/BS degree, followed by 27.6% with AA/AS, 10.3% with high school diploma, and 8.6% with MA/MS degree.

Table 19: Teachers' Education Level by Gender (Private Schools)

School Level	Highest Education	M	F	Grand Total
Elementary	High School	3	9	12
	Associates Degree	1	4	5
	Bachelor Degree	6	17	23
	Masters Degree	1	1	2
	Not Stated	0	3	3
Elementary Total		11	34	45
High School	High School	6	1	7
	Associates Degree	1	3	4
	Bachelor Degree	11	15	26
	Masters Degree	1	3	4
	Not Stated	3	2	5
High School Total		22	24	46
Grand Total		33	58	91

Source: 2011 Annual School Survey

Table 19 shows Teachers' highest education attained by gender for all private schools. Of all teachers, about 48.4% have a college degree, followed by 14% with high school diploma and 7.5% with some college credits. In elementary level 32.6% have BA/BS degree, followed by 30.2% with high school diploma, 11.6% with AA/AS degree, and 2.3% with MA/MS degree. In the secondary level, about 62% have BA/BS degree, followed by 12% with MA/MS, and 4% with AA/AS degree.

Table 20: Student/Teacher Ratio by School Level (Public & Private)

	Public			Private		
	Enrollment	Teachers	Student Teacher Ratio	Enrollment	Teachers	Student Teacher Ratio
Elementary	1774	174	10:1	482	45	10:1
High School	746	67	11:1	518	46	11:1
Total	2520	241	10:1	1000	91	10:1

Source: 2011 Annual School Survey

Table 20 shows teacher-student ratio. Overall, public schools have a slightly higher teacher student ratio of one teacher to every twelve students compared to private schools with teacher to eleven students. When comparing school levels, high school has a ratio of teacher to fourteen students in the public school and one teacher to nine students in the schools. In the elementary level, public schools have a ratio of one teacher to twelve while the ratio for private elementary schools is one teacher to fourteen students.

Table 21: Student/Teacher Ratio by School (Public & Private)

School Name	Public			Private		
	Enrollment	Teachers	Student Teacher Ratio	Enrollment	Teachers	Student Teacher Ratio
Aimeliik	63	9	7:1	-	-	-
Airai	149	13	11:1	-	-	-
Angaur	28	7	4:1	-	-	-
Belau Modekngai School	-	-	-	41	4	10:1
Bethania	-	-	-	67	7	9:1
Emmaus	-	-	-	73	10	7:1
George B. Harris	357	19	18:1	-	-	-
Ibobang	15	5	3:1	-	-	-
John F. Kennedy	10	5	2:1	-	-	-
Koror	568	31	18:1	-	-	-
Maris Stella	-	-	-	256	23	11:1
Melekeok	44	8	5:1	-	-	-
Meyuns	164	11	14:1	-	-	-
Mindszenty	-	-	-	189	17	11:1
Ngaraard	50	9	5:1	-	-	-
Ngarchelong	76	10	7:1	-	-	-
Ngardmau	20	8	2:1	-	-	-
Ngchesar	43	9	4:1	-	-	-
Ngeremlengui	57	10	5:1	-	-	-
Ngiwal	36	6	6:1	-	-	-
Palau	746	67	11:1	-	-	-
Palau Mission Academy	-	-	-	148	8	18:1
Seven Day Adventist	-	-	-	226	22	10:1
Peleliu	83	11	7:1	-	-	-
Pulo Anna	5	1	5:1	-	-	-
Sonsorol	6	2	3:1	-	-	-
Total	2520	241	10:1	1000	91	10:1

Source: 2011 Annual School Survey

Table 22: Personnel Positions by Gender (Public & Private)

Position	Public			Private			Grand Total
	M	F	Total	M	F	Total	
Accountant	0	0	0	0	2	2	2
Administrative Assistant	0	1	1	0	0	0	1
Administrative Officer	0	0	0	0	1	1	1
Administrative Secretary	0	0	0	0	1	1	1
Bookkeeper	0	0	0	0	1	1	1
Boy's Dean	0	0	0	1	0	1	1
Bus Driver	10	0	10	0	0	0	10
Cafeteria Worker	0	0	0	0	1	1	1
Carpenter	0	0	0	2	0	2	2
Chief Maintenance	0	0	0	1	0	1	1
Classroom Teacher	61	180	241	33	58	91	332
Clerk	0	1	1	0	1	1	2
Cook	4	24	28	1	9	10	38
Counselor	1	4	5	0	1	1	6
Custodian	8	0	8	0	0	0	8
Dorm Supervisor	0	0	0	2	1	3	3
Driver	0	0	0	2	0	2	2
Farmer	0	0	0	1	0	1	1
Gardener	0	0	0	1	2	3	3
Girl's Dean	0	0	0	0	1	1	1
JICA Volunteer	0	2	2	0	0	0	2
Lab Assistant	0	2	2	0	0	0	2
Lab Manager	2	4	6	0	0	0	6
Laundry Technician	0	0	0	0	2	2	2
Librarian	1	10	11	1	4	5	16
Library Aide	0	4	4	0	0	0	4
Maintenance	0	0	0	10	0	10	10
Office Manager	0	0	0	0	1	1	1
Peace Corp. Volunteer	0	2	2	0	0	0	2
Principal	9	8	17	4	1	5	22
Registrar	0	1	1	0	2	2	3
Secretary	0	2	2	0	2	2	4
Security Guard	9	0	9	0	0	0	9
Testing Coordinator	0	0	0	0	1	1	1
Vice Principal	1	2	3	3	3	6	9
Grand Total	106	247	353	62	95	157	510

Source: 2011 Annual School Survey

Table 23 (A-J): Personnel Positions by School & Gender {Public Schools}

Table 23 (A) Aimeliik Elementary School

Position	Male	Female	Total
Bus Driver	2	0	2
Classroom Teacher	2	7	9
Cook	0	2	2
Lab Manager	0	1	1
Library Aide	0	1	1
Principal	1	0	1
Total	5	11	16

Table 23 (B) Airai Elementary School

Position	Male	Female	Total
Bus Driver	1	0	1
Classroom Teacher	3	10	13
Clerk	0	1	1
Cook	0	2	2
Library Aide	0	1	1
Principal	0	1	1
Security Guard	1	0	1
Total	5	15	20

Table 23 (C) Angaur Elementary School

Position	Male	Female	Total
Classroom Teacher	2	5	7
Cook	0	1	1
Librarian	0	1	1
Principal	0	1	1
Total	2	8	10

Table 23 (D) GB Harris Elementary School

Position	Male	Female	Total
Classroom Teacher	6	13	19
Cook	0	5	5
Custodian	1	0	1
Lab Manager	0	1	1
Librarian	0	1	1
Principal	1	0	1
Secretary	0	1	1
Vice Principal	0	1	1
Total	8	22	30

Table 23 (E) Ibobang Elementary School

Position	Male	Female	Total
Classroom Teacher	0	5	5
Cook	0	1	1
Librarian	0	1	1
Principal	1	0	1
Total	1	7	8

Table 23 (F) JFK Elementary School

Position	Male	Female	Total
Classroom Teacher	2	3	5
Cook	0	1	1
Librarian	0	1	1
Principal	0	1	1
Total	2	6	8

Table 23 (G) Koror Elementary School

Position	Male	Female	Total
Classroom Teacher	5	26	31
Cook	1	5	6
Custodian	1	0	1
Lab Assistant	0	1	1
Librarian	0	2	2
Principal	1	0	1
Security Guard	3	0	3
Vice Principal	0	1	1
Total	11	35	46

Table 23 (H) Melekeok Elementary School

Position	Male	Female	Total
Classroom Teacher	2	6	8
Cook	0	1	1
Lab Manager	0	1	1
Peace Corp. Volunteer	0	1	1
Principal	0	1	1
Total	2	10	12

Table 23 (I) Meyuns Elementary School

Position	Male	Female	Total
Classroom Teacher	0	11	11
Cook	0	2	2
Custodian	1	0	1
Lab Manager	1	0	1
Librarian	0	1	1
Principal	1	0	1
Secretary	0	1	1
Security Guard	1	0	1
Total	4	15	19

Table 23 (J) Ngaraard Elementary School

Position	Male	Female	Total
Bus Driver	2	0	2
Classroom Teacher	1	8	9
Cook	1	0	1
Librarian	0	1	1
Principal	1	0	1
Total	5	9	14

Table 23 (K-S): Personnel Positions by School {Public Schools}

Table 23 (K) Ngarchelong Elementary School

Position	Male	Female	Total
Bus Driver	1	0	1
Classroom Teacher	0	10	10
Cook	0	1	1
Lab Assistant	0	1	1
Principal	0	1	1
Total	1	13	14

Table 23 (L) Ngardmau Elementary School

Position	Male	Female	Total
Classroom Teacher	4	4	8
Cook	0	1	1
Librarian	1	0	1
Principal	1	0	1
Total	6	5	11

Table 23 (M) Ngchesar Elementary School

Position	Male	Female	Total
Bus Driver	2	0	2
Classroom Teacher	2	7	9
Cook	0	1	1
Library Aide	0	1	1
Principal	1	0	1
Total	5	9	14

Table 23 (N) Ngeremlengui Elementary School

Position	Male	Female	Total
Bus Driver	1	0	1
Classroom Teacher	2	8	10
Cook	1	0	1
JICA Volunteer	0	1	1
Principal	0	1	1
Total	4	10	14

Table 23 (O) Ngiwal Elementary School

Position	Male	Female	Total
Classroom Teacher	3	3	6
Librarian	0	1	1
Principal	1	0	1
Total	4	4	8

Table 23 (P) Peleliu Elementary School

Position	Male	Female	Total
Bus Driver	1	0	1
Classroom Teacher	1	10	11
Cook	1	1	2
JICA Volunteer	0	1	1
Lab Manager	1	0	1
Library Aide	0	1	1
Peace Corp. Volunteer	0	1	1
Principal	0	1	1
Total	4	15	19

Table 23 (Q) Pulo Anna Elementary School

Position	Male	Female	Total
Classroom Teacher	0	1	1
Total	0	1	1

Table 23 (R) Sonsorol Elementary School

Position	Male	Female	Total
Classroom Teacher	1	1	2
Total	1	1	2

Table 23 (S) Palau High School

Position	Male	Female	Total
Administrative Assistant	0	1	1
Classroom Teacher	25	42	67
Counselor	1	4	5
Custodian	5	0	5
Lab Manager	0	1	1
Librarian	0	1	1
Principal	1	0	1
Registrar	0	1	1
Security Guard	4	0	4
Vice Principal	1	0	1
Total	37	50	87

Source: 2011 Annual School Survey

Table 24 (A-G): Personnel Positions by School & Gender {Private Schools}

Table 24 (A) Maris Stella School [Elementary School]

Position	Male	Female	Total
Bookkeeper	0	1	1
Classroom Teacher	3	20	23
Maintenance	2	0	2
Principal	1	0	1
Registrar	0	1	1
Vice Principal	0	1	1
Total	6	23	29

Table 24 (B) Seven Day Adventist (SDA) [Elementary School]

Position	Male	Female	Total
Accountant	0	1	1
Classroom Teacher	8	14	22
Clerk	0	1	1
Librarian	0	1	1
Maintenance	1	0	1
Office Manager	0	1	1
Vice Principal	1	0	1
Total	10	18	28

Table 24 (C) Belau Modekngel School [High School]

Position	Male	Female	Total
Carpenter	1	0	1
Classroom Teacher	3	1	4
Cook	0	1	1
Dorm Supervisor	1	0	1
Farmer	1	0	1
Librarian	0	1	1
Maintenance	1	0	1
Principal	0	1	1
Secretary	0	1	1
Vice Principal	1	0	1
Total	8	5	13

Table 24 (D) Bethania High School [High School]

Position	Male	Female	Total
Administrative Secretary	0	1	1
Classroom Teacher	1	6	7
Cook	0	4	4
Counselor	0	1	1
Dorm Supervisor	0	1	1
Driver	1	0	1
Gardener	1	2	3
Laundry Technician	0	1	1
Maintenance	2	0	2
Principal	1	0	1
Vice Principal	0	1	1
Total	6	17	23

Table 24 (E) Emmaus High School [High School]

Position	Male	Female	Total
Chief Maintenance	1	0	1
Classroom Teacher	5	5	10
Cook	1	2	3
Dorm Supervisor	1	0	1
Driver	1	0	1
Laundry Technician	0	1	1
Librarian	0	1	1
Maintenance	2	0	2
Principal	1	0	1
Secretary	0	1	1
Total	12	10	22

Table 24 (F) Mindszenty High School [High School]

Position	Male	Female	Total
Accountant	0	1	1
Administrative Officer	0	1	1
Carpenter	1	0	1
Classroom Teacher	8	9	17
Librarian	1	1	2
Maintenance	1	0	1
Principal	1	0	1
Testing Coordinator	0	1	1
Vice Principal	1	0	1
Total	13	13	26

Table 24 (G) Palau Mission Academy [High School]

Position	Male	Female	Total
Boy's Dean	1	0	1
Cafeteria Worker	0	1	1
Classroom Teacher	5	3	8
Cook	0	2	2
Girl's Dean	0	1	1
Maintenance	1	0	1
Registrar	0	1	1
Vice Principal	0	1	1
Total	7	9	16

Source: 2011 Annual School Survey

Retirees Projection

Table 25: Retirees Projection (Public Schools)

Position	2011	2012	2013	2014	2015	2016	2017	2018	2019	2020	2021	Total
Administrative Assistant	0	0	0	0	0	0	0	0	2	1	0	3
Administrative Specialist	0	1	0	0	0	0	0	0	0	0	0	1
Bureau Director	0	0	0	0	0	1	0	1	0	0	0	2
Bus Driver	0	1	1	0	0	0	0	0	3	1	0	6
Clerk Typist	0	1	0	0	0	0	0	0	0	0	1	2
Community Development Specialist	0	0	0	0	0	0	0	0	0	1	0	1
Computer Lab Manager	0	1	0	0	0	0	0	2	1	0	1	5
Cook	1	3	2	2	1	1	1	0	1	1	3	16
Custodial Worker	0	0	0	0	0	1	0	0	0	0	0	1
Data Entry Clerk	1	0	0	0	0	0	0	0	0	0	0	1
Division Chief	0	2	0	0	1	0	0	1	0	1	0	5
Education Specialist	0	0	0	1	1	0	1	1	0	2	0	6
Education Testing Technicia	0	0	0	0	1	0	0	0	0	0	0	1
Facilities Maintenance Worker	0	0	0	0	0	0	0	1	0	0	0	1
Graphic Artist	0	0	0	0	0	1	0	0	0	0	0	1
Instructional Media Technician	0	0	0	0	1	0	0	0	0	0	0	1
Library Aide	0	0	0	1	1	0	0	0	0	0	1	3
Program Coordinator	0	0	1	0	0	0	0	0	0	0	0	1
Program Manager	0	0	0	1	0	0	0	0	0	0	2	3
School Principal	0	2	1	1	0	1	0	1	0	1	1	8
Security Officer	0	1	0	0	1	2	0	0	0	0	0	4
Teacher	2	0	3	2	0	1	1	0	4	5	2	20
Vice Principal	0	1	0	0	0	0	0	0	0	0	0	1
Warehouse Worker	0	0	0	0	0	0	0	0	0	0	1	1
Total	4	13	8	8	7	8	3	7	11	13	12	94

Source: Division of Personnel Management, Ministry of Education

Note: The projections of the number of employees retiring are based on retirement by age 60 or 30 years of service. Retirement date is subject to change if employee is requested an extension of not less or more than 2 years after reaching age 60 or 30 years of service.

FACILITIES:

Instructional Facilities

Table 26: Instructional Facilities by School (Public Schools)

School Name	Enrollment	Regular Classroom	SpEd Classroom	Computer Lab	Cafeteria	Library	Music Room
Aimeliik Elementary School	63	8	1	1	1	1	0
Airai Elementary School	149	10	1	1	1	1	0
Angaur Elementary School	28	7	1	1	1	1	0
GBH Elementary School	357	24	1	2	1	1	0
Ibobang Elementary School	15	4	1	0	1	1	0
John F. Kennedy Elementary School	10	4	1	1	1	0	0
Koror Elementary School	568	30	2	2	1	1	0
Melekeok Elementary School	44	8	1	1	1	1	0
Meyuns Elementary School	164	11	1	1	1	1	0
Ngaraard Elementary School	50	8	1	1	1	1	0
Ngarchelong Elementary School	76	8	1	1	1	1	0
Ngardmau Elementary School	20	8	1	1	1	1	0
Ngchesar Elementary School	43	8	1	1	1	1	0
Ngeremlengui Elementary School	57	8	1	1	1	1	0
Ngiwal Elementary School	36	8	1	1	1	1	0
Palau High School	746	37	2	3	0	0	0
Peleliu Elementary School	83	8	1	1	1	1	1
Pulo Anna Elementary School	5	1	0	0	1	1	0
Sonsorol Elementary School	6	1	0	0	1	1	0
Total	2520	201	19	20	18	17	1

Source: 2011 Annual School Survey

Table 27: Instructional Facilities by School (Private Schools)

School Name	Enrollment	Regular Classroom	SpEd Classroom	Vocational Classroom	Computer Lab
Belau Modekngai School	41	6	0	4	1
Bethania High School	67	4	0	0	1
Emmaus High School	73	4	0	0	1
Maris Stella School	256	17	1	0	1
Mindzenty High School	189	8	0	0	1
Palau Mission Academy	148	5	0	0	1
Seven Day Adventist	226	17	0	0	1
Total	1000	61	1	4	7

School Name	Enrollment	Science Laboratory	Library	ESL	Music Room
Belau Modekngai School	41	0	1	0	0
Bethania High School	67	0	1	0	0
Emmaus High School	73	1	1	0	0
Maris Stella School	256	0	1	0	0
Mindzenty High School	189	1	1	0	0
Palau Mission Academy	148	1	1	0	0
Seven Day Adventist	226	0	1	0	1
Total	1000	3	7	0	1

Source: 2011 Annual School Survey

Other Facilities

Table 28: Other Facilities by School (Public Schools)

School Name	Enrollment	Cafeteria	Office Space	Teachers Office	Gym	PE Room	PE Store Room
Aimeliik Elementary School	63	1	1	1	0	0	0
Airai Elementary School	149	1	1	1	0	0	0
Angaur Elementary School	28	1	1	0	0	0	0
GBH Elementary School	357	1	1	0	0	0	0
Ibobang Elementary School	15	1	1	0	0	0	0
John F. Kennedy Elementary School	10	1	1	0	0	0	0
Koror Elementary School	568	1	1	0	1	0	0
Melekeok Elementary School	44	1	1	0	0	0	0
Meyuns Elementary School	164	1	1	0	0	0	0
Ngaraard Elementary School	50	1	2	1	0	0	0
Ngarchelong Elementary School	76	1	1	0	0	0	0
Ngardmau Elementary School	20	1	1	0	0	0	0
Ngchesar Elementary School	43	1	1	0	0	0	0
Ngeremlengui Elementary School	57	1	1	1	0	0	0
Ngiwal Elementary School	36	1	1	1	0	0	0
Palau High School	746	0	2	7	0	0	0
Peleliu Elementary School	83	1	1	0	0	1	1
Pulo Anna Elementary School	5	1	0	0	0	0	0
Sonsorol Elementary School	6	1	0	0	0	0	0
Total	2520	18	19	12	1	1	1

School Name	Enrollment	Health Clinic	Flush Toilet	Uriners	Outhouse	Store Room
Aimeliik Elementary School	63	0	10	0	0	1
Airai Elementary School	149	0	9	0	0	0
Angaur Elementary School	28	0	1	0	0	0
GBH Elementary School	357	1	23	0	0	0
Ibobang Elementary School	15	0	2	0	0	1
John F. Kennedy Elementary School	10	0	0	0	1	1
Koror Elementary School	568	0	4	0	0	0
Melekeok Elementary School	44	0	4	0	0	1
Meyuns Elementary School	164	0	10	0	0	1
Ngaraard Elementary School	50	0	2	0	0	1
Ngarchelong Elementary School	76	0	2	0	0	2
Ngardmau Elementary School	20	0	1	0	0	1
Ngchesar Elementary School	43	0	3	0	0	1
Ngeremlengui Elementary School	57	0	1	0	0	2
Ngiwal Elementary School	36	0	2	0	0	1
Palau High School	746	1	36	20	0	1
Peleliu Elementary School	83	1	2	0	0	0
Pulo Anna Elementary School	5	0	0	0	0	1
Sonsorol Elementary School	6	0	0	0	0	1
Total	2520	3	112	20	1	16

Source: 2011 Annual School Survey

Table 29: Other Facilities by School (Private Schools)

School Name	Enrollment	Cafeteria	Office Space	Teachers Office	Gym
Belau Modekngai School	41	1	1	1	0
Bethania High School	67	1	1	1	0
Emmaus High School	73	1	1	1	0
Maris Stella School	256	0	0	2	0
Mindzenty High School	189	1	1	1	1
Palau Mission Academy	148	1	1	1	0
Seven Day Adventist	226	0	1	2	0
Total	1000	5	6	9	1

School Name	Enrollment	PE Room	Dormitory	Flush Toilet	Store Room
Belau Modekngai School	41	0	0	8	2
Bethania High School	67	0	1	6	1
Emmaus High School	73	0	4	8	1
Maris Stella School	256	0	0	4	1
Mindzenty High School	189	1	0	9	4
Palau Mission Academy	148	0	0	14	1
Seven Day Adventist	226	0	0	22	3
Total	1000	1	5	71	13

Source: 2011 Annual School Survey

Furniture

Table 30: Furniture by School (Public Schools)

School Name	Enrollment	Student Desk-combo	Student Desks	Student Chairs	Chalkboard/Markerboard
Aimeliik Elementary School	63	25	34	34	11
Airai Elementary School	149	136	93	133	20
Angaur Elementary School	28	6	28	28	10
GBH Elementary School	357	156	157	253	30
Ibobang Elementary School	15	0	15	15	5
John F. Kennedy Elementary School	10	13	1	15	12
Koror Elementary School	568	352	203	203	48
Melekeok Elementary School	44	10	44	44	20
Meyuns Elementary School	164	100	200	200	14
Ngaraard Elementary School	50	70	70	0	9
Ngarchelong Elementary School	76	0	75	75	9
Ngardmau Elementary School	20	6	30	30	8
Ngchesar Elementary School	43	10	55	75	12
Ngeremlengui Elementary School	57	52	5	17	13
Ngiwal Elementary School	36	0	0	40	6
Palau High School	746	0	757	350	67
Peleliu Elementary School	83	120	0	30	26
Pulo Anna Elementary School	5	9	0	0	3
Sonsorol Elementary School	6	10	0	0	3
Total	2520	1075	1767	1542	326

School Name	Enrollment	Classroom Worktables	Teachers Desks	Teachers Chairs
Aimeliik Elementary School	63	5	15	8
Airai Elementary School	149	9	34	18
Angaur Elementary School	28	2	10	8
GBH Elementary School	357	71	28	18
Ibobang Elementary School	15	4	4	4
John F. Kennedy Elementary School	10	12	7	6
Koror Elementary School	568	30	47	45
Melekeok Elementary School	44	10	13	13
Meyuns Elementary School	164	13	11	11
Ngaraard Elementary School	50	0	9	9
Ngarchelong Elementary School	76	8	13	13
Ngardmau Elementary School	20	0	6	6
Ngchesar Elementary School	43	12	10	10
Ngeremlengui Elementary School	57	12	11	11
Ngiwal Elementary School	36	4	6	6
Palau High School	746	96	84	84
Peleliu Elementary School	83	10	11	11
Pulo Anna Elementary School	5	1	1	2
Sonsorol Elementary School	6	1	1	2
Total	2520	300	321	285

Source: 2011 Annual School Survey

Table 31: Furniture by School (Private Schools)

School Name	Enrollment	Student Desk-combo	Student Desks	Student Chairs	Chalkboard/Markerboard
Belau Modekngei School	41	90	11	11	8
Bethania High School	67	0	90	90	2
Emmaus High School	73	65	0	0	5
Maris Stella School	256	96	230	230	18
Mindzenty High School	189	240	0	0	22
Palau Mission Academy	148	120	0	9	9
Seven Day Adventist	226	75	240	270	18
Total	1000	686	571	610	82

School Name	Enrollment	Classroom Worktables	Teachers Desks	Teachers Chairs
Belau Modekngei School	41	8	8	8
Bethania High School	67	0	5	5
Emmaus High School	73	0	4	4
Maris Stella School	256	4	15	15
Mindzenty High School	189	9	27	27
Palau Mission Academy	148	9	6	6
Seven Day Adventist	226	10	21	21
Total	1000	40	86	86

Source: 2011 Annual School Survey

Equipment

Table 32: Equipment by School (Public Schools)

School Name	Enrollment	Computers	Camera	CD player	Computer Projector	DVD Players
Aimeliik Elementary School	63	19	1	0	0	0
Airai Elementary School	149	21	1	0	0	0
Angaur Elementary School	28	7	1	0	1	0
GBH Elementary School	357	39	1	0	0	0
Ibobang Elementary School	15	4	0	0	1	0
John F. Kennedy Elementary School	10	6	1	0	0	0
Koror Elementary School	568	55	0	0	0	0
Melekeok Elementary School	44	11	1	0	0	0
Meyuns Elementary School	164	15	1	0	0	0
Ngaraard Elementary School	50	7	0	0	0	0
Ngarchelong Elementary School	76	12	1	1	0	0
Ngardmau Elementary School	20	4	0	0	0	0
Ngchesar Elementary School	43	12	0	0	0	0
Ngeremlengui Elementary School	57	14	1	0	0	0
Ngiwal Elementary School	36	9	0	0	0	0
Palau High School	746	80	3	0	0	0
Peleliu Elementary School	83	12	1	0	0	2
Pulo Anna Elementary School	5	0	0	0	0	0
Sonsorol Elementary School	6	0	0	0	0	0
Total	2520	327	13	1	2	2

School Name	Enrollment	Infocus Projector	Laser Disc Player	Overhead Projector	PA System	Printers
Aimeliik Elementary School	63	1	2	1	1	2
Airai Elementary School	149	1	10	1	1	2
Angaur Elementary School	28	0	0	0	1	1
GBH Elementary School	357	3	12	3	1	4
Ibobang Elementary School	15	0	3	0	1	2
John F. Kennedy Elementary School	10	1	0	0	0	1
Koror Elementary School	568	1	17	1	2	4
Melekeok Elementary School	44	2	1	1	1	2
Meyuns Elementary School	164	1	1	1	1	2
Ngaraard Elementary School	50	1	0	1	1	1
Ngarchelong Elementary School	76	1	0	1	2	1
Ngardmau Elementary School	20	0	0	1	1	2
Ngchesar Elementary School	43	1	1	1	1	1
Ngeremlengui Elementary School	57	1	4	1	1	1
Ngiwal Elementary School	36	1	1	1	1	3
Palau High School	746	1	2	12	2	12
Peleliu Elementary School	83	1	6	1	1	2
Pulo Anna Elementary School	5	0	0	0	0	0
Sonsorol Elementary School	6	0	0	0	0	0
Total	2520	17	60	27	19	43

Source: 2011 Annual School Survey

Table 32: Equipment by School (Public Schools) – Cont.

School Name	Enrollment	Tape Recorder	Television	Video Camera	Video Player	Xerox Machine
Aimeliik Elementary School	63	0	1	1	1	2
Airai Elementary School	149	0	9	1	1	1
Angaur Elementary School	28	1	1	1	1	1
GBH Elementary School	357	1	5	3	1	1
Ibobang Elementary School	15	1	2	1	0	2
John F. Kennedy Elementary School	10	1	0	1	0	1
Koror Elementary School	568	1	12	0	2	2
Melekeok Elementary School	44	1	3	1	1	1
Meyuns Elementary School	164	2	2	1	1	2
Ngaraard Elementary School	50	1	2	1	1	1
Ngarchelong Elementary School	76	1	1	1	1	2
Ngardmau Elementary School	20	0	0	0	0	1
Ngchesar Elementary School	43	0	1	0	1	1
Ngeremlengui Elementary School	57	3	4	1	1	2
Ngiwal Elementary School	36	4	1	1	1	2
Palau High School	746	0	11	0	1	6
Peleliu Elementary School	83	6	10	1	2	1
Pulo Anna Elementary School	5	0	0	0	0	1
Sonsorol Elementary School	6	0	0	0	0	1
Total	2520	23	65	15	16	31

Source: 2011 Annual School Survey

Table 33: Equipment by School (Private Schools)

School Name	Enrollment	Computers	Camera	Combo Printer/Scanner	Digital Camera	Infocus Projector
Belau Modekngai School	41	25	1	0	0	1
Bethania High School	67	23	0	0	0	2
Emmaus High School	73	18	1	0	0	0
Maris Stella School	256	25	0	0	0	0
Mindzenty High School	189	35	0	0	0	0
Palau Mission Academy	148	16	0	1	2	1
Seven Day Adventist	226	33	2	0	0	1
Total	1000	175	4	1	2	5

Source: 2011 Annual School Survey

Table 33: Equipment by School (Private Schools) – Cont.

School Name	Enrollment	Laser Disc Player	Overhead Projector	PA System	Printers	Tape Recorder
Belau Modekngai School	41	0	1	1	4	2
Bethania High School	67	0	1	1	3	0
Emmaus High School	73	1	1	1	5	0
Maris Stella School	256	0	1	1	4	2
Mindzenty High School	189	0	1	2	12	1
Palau Mission Academy	148	0	1	0	3	0
Seven Day Adventist	226	1	1	0	3	2
Total	1000	2	7	6	34	7

School Name	Enrollment	Television	Video Camera	Video Player	Xerox Machine
Belau Modekngai School	41	1	1	1	2
Bethania High School	67	0	0	0	1
Emmaus High School	73	3	0	2	2
Maris Stella School	256	3	0	1	2
Mindzenty High School	189	1	1	2	3
Palau Mission Academy	148	0	0	0	1
Seven Day Adventist	226	1	1	1	1
Total	1000	9	3	7	12

Source: 2011 Annual School Survey

Table 34: Student/Computer Ratio by School Level (Public & Private)

School Level	Public			Private		
	Enrollment	Computers	Ratio	Enrollment	Computers	Ratio
Elementary	1774	247	7:1	482	58	8:1
High School	746	80	9:1	518	117	4:1
Grand Total	2520	327	7:1	1000	175	5:1

Source: 2011 Annual School Survey

Table 34 shows the computer-student ratio. Overall, private schools have a slightly higher computer-student ratio of one computer to every eight students compared to public schools with one computer to seven students. When comparing school levels, high school for both public and private schools have a ratio of one computer to five or six students. In the elementary level, public schools have a ratio of one computer to seven students while the ratio for private schools is one computer to sixteen students.

Table 35a: Student/Computer Ratio by School (Public)

School Name	Enrollment	Computers	Ratio
Aimeliik Elementary School	63	19	3:1
Airai Elementary School	149	21	7:1
Angaur Elementary School	28	7	4:1
GBH Elementary School	357	39	9:1
Ibobang Elementary School	15	4	3:1
John F. Kennedy Elementary School	10	6	1:1
Koror Elementary School	568	55	10:1
Melekeok Elementary School	44	11	4:1
Meyuns Elementary School	164	15	10:1
Ngaraard Elementary School	50	7	7:1
Ngarchelong Elementary School	76	12	6:1
Ngardmau Elementary School	20	4	5:1
Ngchesar Elementary School	43	12	3:1
Ngeremlengui Elementary School	57	14	4:1
Ngiwal Elementary School	36	9	4:1
Palau High School	746	80	9:1
Peleliu Elementary School	83	12	6:1
Pulo Anna Elementary School	5	0	0
Sonsorol Elementary School	6	0	0
Total	2520	327	7:1

Source: 2011 Annual School Survey

Table 35a shows computer-student ratio for all public schools. The computer ratio varies from school to school. JFK, Pulo Anna and Sonsorol Elementary Schools have the lowest ratio of one computer per student and the Koror Elementary School has the highest ratio of one computer to every twelve students.

Table 35b: Student/Computer Ratio by School (Private)

School Name	Enrollment	Computers	Ratio
Belau Modekngai School	41	25	1:1
Bethania High School	67	23	2:1
Emmaus High School	73	18	4:1
Maris Stella School	256	25	10:1
Mindzenty High School	189	35	5:1
Palau Mission Academy	148	16	9:1
Seven Day Adventist	226	33	6:1
Total	1000	175	5:1

Source: 2011 Annual School Survey

Table 35b shows computer-student ratio for all private schools. The computer ratio also varies from school to school. Emmaus High School has the lowest ratio of one computer to three students and Maris Stella School has the highest ratio of one computer to every twenty-six students.

FINANCE

➤ General Funds

Table 36: General Fund Budget

Budget Item	Amount
Bureau of Curriculum and Instruction	\$372,000.00
Bureau of School Administration	\$5,272,000.00
Food Service Program	\$620,000.00
Office of the Minister	\$58,000.00
School Books Supplies and Instructional Equipments	\$291,000.00
Total	\$6,613,000.00

Source: Finance Unit, Ministry of Education

Table 36 shows the local funding to the Ministry of Education through annual appropriation by the national congress (Olbiil Era Kelulau). Of all the budget items, the Bureau of School Administration is allocated about 70.8% of the total appropriation.

➤ Federal Program Budget

Budget Item	Amount
Adult Education State Grant Program	\$28,244.00
College Access Challenge Grant	\$1,500,000.00
GEAR UP Project	\$262,435.00
HIV School Prevention Project	\$95,000.00
Vocational Education Improvement	\$157,142.00
Special Education Program	\$1,011,283.00
Territories & Freely Associated States Education Grant	\$1,000,000.00
Total	\$4,054,104.00

Source: Finance Unit, Ministry of Education

Table 37: Federal Program Budget

Table 37 shows the current education program funded by the United States Federal Government Grants. The federal grants amount to 29.6% of annual funding available to the Ministry of Education.