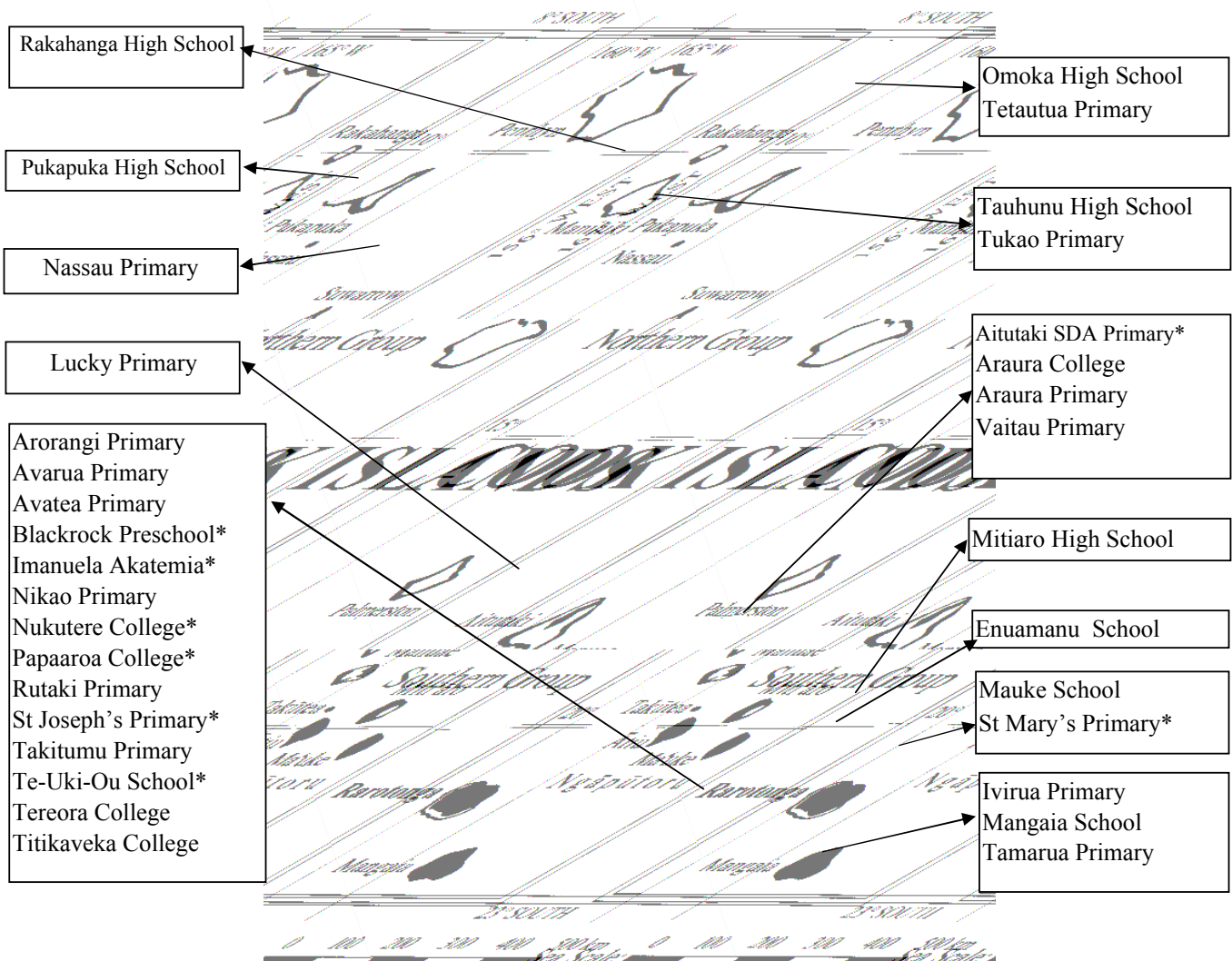


COOK ISLANDS SCHOOLS

DISTRIBUTION OF SCHOOLS

The Cook Islands consists of 15 islands. Rarotonga is the main island in terms of population and economic activity. The Southern Group, which excludes Rarotonga in this digest, consists of 7 islands, 2 of which (Manuae and Takutea) are not permanently populated. The least populated region is the Northern Group. The group consists of 7 islands with only Suvarrow lacking a permanent population. Schools are established on all 12 permanently populated islands. All of the 33 schools in the Cook Islands are co-educational. There are 14 schools on Rarotonga, 11 in the Southern Group and 8 in the Northern Group. The total number of schools in 2002 decreased by 1 due to the merging of Amuri School with Araura Primary.

MAP OF COOK ISLANDS SCHOOLS



*Church or Private Schools

STATUS OF SCHOOLS

The Government has established schools on all twelve permanently inhabited islands. "Private " is used to denote a non-government school neither owned nor operated by a religious organisation. The two private schools, Blackrock Preschool and Te-Uki-Ou Primary, are located on Rarotonga. There are also four Church schools on Rarotonga. Two are administered by the Catholic Church (St Joseph's and Nukutere), one by the Seventh Day Adventist Church (Papaaroa) and one by the Assembly Of God Church (Imanuela Akatemia). The Catholic Church also administers a primary school (St Mary's) on Mauke and the SDA Church administers a primary school (Aitutaki SDA) on Aitutaki.

STATUS OF SCHOOLS BY REGION

Status	Rarotonga	Southern Grp	Northern Grp	Total
Government	8	9	8	25
Church	4	2	0	6
Private	2	0	0	2
Total	14	11	8	33

TEACHERS AND STUDENTS BY SCHOOL STATUS

Status	Schools	Teachers			Students			P-T Ratio
		Male	Female	Total	Male	Female	Total	
Church	6	9	29	38	308	268	576	15
Government	25	71	168	239	2029	1899	3928	16
Private	2	0	13	13	85	79	164	13
Total	33	80	210	290	2422	2246	4668	16

STUDENT : SCHOOL RATIOS BY ISLAND

Island	Schools	Students	Student/Sch
Aitutaki	4	595	149
Atiu	1	186	186
Mangaia	3	257	86
Manihiki	2	147	74
Mauke	2	177	89
Mitiaro	1	75	75
Nassau	1	26	26
Palmerston	1	17	17
Penrhyn	2	124	62
Pukapuka	1	219	219
Rakahanga	1	40	40
Rarotonga	14	2805	200
Total	33	4668	141

LEVELS OF SCHOOL

PRE-SCHOOL students are children aged from 3 years 6 months up to 4 years 11 months inclusive who are voluntarily enrolled for pre-school instruction.

PRIMARY students are children who are enrolled for instruction at Grade 1 - 6 level. Attendance is compulsory from the age of 5. The expected age range is from 5 to 10 years if a child spends one year in each grade.

SECONDARY students are children and young adults who are enrolled for instruction at Form 1 - 7 level. Attendance is compulsory until the end of the year in which a student turns 15 years of age.

LEVELS	RANGE	SCHOOLS	NAME OF SCHOOLS
Preschool only	PreS	1	Blackrock
Preschool & Primary only	PreS - G2	1	Tamarua
	PreS - G6	7	Takitumu, Rutaki, St Joseph's, Araura Primary, Vaitau Aitutaki SDA, Ivirua
Preschool, Primary & Secondary	PreS - F1	1	Nassau
	PreS - F2	5	Avarua, Nikao, Te-Uki-Ou, Arorangi, St Mary's
	PreS - F4	4	Lucky School, Tauhunu, Rakahanga, Tetautua
	PreS - F5CI	4	Mitiaro, Pukapuka, Omoka, Tukao
	PreS - F5NZ	2	Imanuela Akatemia, Mauke School
	PreS - F6	2	Mangaia School, Enuamanu School
Primary & Secondary only	G1 - F2	1	Avatea
	G1 - F4	1	Papaaroa College
Secondary only	F1 - F5NZ	2	Titikaveka College, Nukutere College
	F1 - F6	1	Araura College
	F3 - F7	1	Tereora College

Schools with :	Rarotonga	Sth Group	Nth Group	Total
Pre-school pupils	9	10	8	27
Primary pupils	10	10	8	28
Secondary pupils	10	6	8	24

STUDENT ENROLMENTS

COMPARISON OF 2002 ENROLMENTS WITH 1996 AND 2001

DISTRICT	1996	1997	1998	1999	2000	2001	2002	1996/2002 Change	1996/2002 % Change	2001/2002 Change	2001/2002 % Change
Aitutaki	855	763	726	710	651	642	595	-260	-30%	-47	-7%
Atiu	316	283	251	216	200	196	186	-130	-41%	-10	-5%
Mangaia	378	357	341	308	275	266	257	-121	-32%	-9	-3%
Manihiki	171	178	41	124	121	129	147	-24	-14%	18	14%
Mauke	249	233	239	215	202	189	177	-72	-29%	-12	-6%
Mitiaro	100	95	80	80	75	68	75	-25	-25%	7	10%
Nassau	29	30	42	38	37	38	26	-3	-10%	-12	-32%
Palmerston	10	3	0	12	0	9	17	7	70%	8	89%
Penrhyn	195	171	166	141	138	124	124	-71	-36%	0	0%
Pukapuka	268	254	251	258	264	249	219	-49	-18%	-30	-12%
Rakahanga	58	67	63	46	31	38	40	-18	-31%	2	5%
Rarotonga	2931	2801	2750	2619	2554	2709	2805	-126	-4%	96	4%
Total	5560	5235	4950	4767	4548	4657	4668	-892	-16%	11	0.2%

REGION	1996	1997	1998	1999	2000	2001	2002	1996/2002 Change	1996/2002 % Change	2001/2002 Change	2001/2002 % Change
Northern Group	731	703	563	619	591	587	573	-158	-22%	-14	-2%
Rarotonga	2931	2801	2750	2619	2554	2709	2805	-126	-4%	96	4%
Southern Group	1898	1731	1637	1529	1403	1361	1290	-608	-32%	-71	-5%

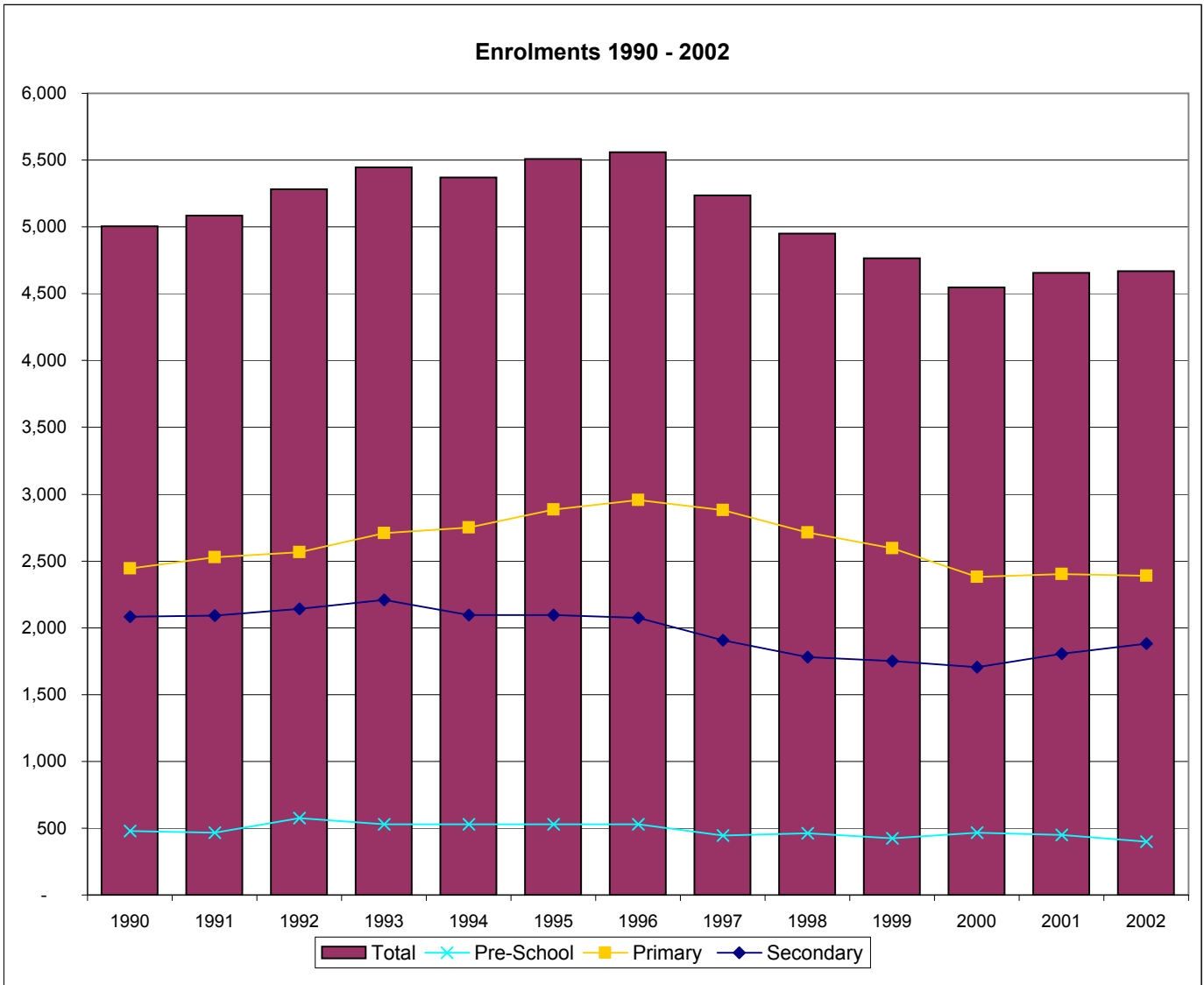
SCHOOL STATUS	1996	1997	1998	1999	2000	2001	2002	1996/2002 Change	1996/2002 % Change	2001/2002 Change	2001/2002 % Change
Government	4763	4480	4219	4054	3861	3970	3928	-835	-18%	-42	-1%
Non-government	797	755	731	713	687	687	740	-57	-7%	53	8%

1990-2002 ENROLMENTS BY LEVEL

Year	Pre-School	Primary	Secondary	Total
1990	480	2,442	2,082	5,004
1991	467	2,526	2,093	5,086
1992	575	2,564	2,143	5,282
1993	530	2,708	2,208	5,446
1994	527	2,750	2,094	5,371
1995	529	2,884	2,095	5,508
1996	530	2,956	2,074	5,560
1997	447	2,882	1,906	5,235
1998	460	2,711	1,779	4,950
1999	422	2,594	1,751	4,767
2000	465	2,379	1,704	4,548
2001	451	2,402	1,804	4,657
2002	399	2,388	1,881	4,668
Average	483	2,630	1,970	5,083

Data for 1995 to 2002 is derived from the EMIS. Data from 1990 to 1994 is derived from the March Monthly School Returns.

Since 1996 there has been a 25% decrease in preschool rolls, a 19% decrease in primary rolls and a 9% decrease in secondary rolls. The overall decrease since 1996 is 16%.



ENROLMENTS BY LEVEL AND GENDER

ISLAND	SCHOOL	Students				Pre-school		Primary		Secondary		Total	
		PreS	Prim	Sec	Total	Male	Female	Male	Female	Male	Female	Female	%Female
Aitutaki	Aitutaki SDA	13	42	0	55	8	5	25	17	0	0	22	40.0
	Araura College	0	0	264	264	0	0	0	0	139	125	125	47.3
	Araura Primary	17	178	0	195	7	10	94	84	0	0	94	48.2
	Vaitau Primary	12	69	0	81	6	6	34	35	0	0	41	50.6
Atiu	Enuamanu School	19	96	71	186	7	12	48	48	32	39	99	53.2
Mangaia	Ivirua Primary	10	28	0	38	4	6	15	13	0	0	19	50.0
	Mangaia School	20	73	113	206	9	11	37	36	54	59	106	51
	Tamarua Primary	4	9	0	13	3	1	3	6	0	0	7	54
Manihiki	Tauhunu High School	13	39	26	78	6	7	19	20	15	11	38	49
	Tukao Primary	8	40	21	69	6	2	24	16	9	12	30	43
Mauke	Mauke School	13	30	72	115	2	11	12	18	44	28	57	50
	St Mary's Primary	8	39	15	62	4	4	25	14	10	5	23	37
Mitiaro	Mitiaro High School	18	35	22	75	11	7	22	13	16	6	26	35
Nassau	Nassau Primary	1	21	4	26	1	0	19	2	2	2	4	15
Palmerston	Lucky School	9	6	2	17	5	4	2	4	0	2	10	59
Penryhn	Omoka High School	12	54	36	102	5	7	25	29	18	18	54	53
	Tetautua Primary	3	11	8	22	2	1	7	4	5	3	8	36
Pukapuka	Pukapuka High School	10	135	74	219	6	4	77	58	37	37	99	45
Rakahanga	Rakahanga High school	7	26	7	40	2	5	13	13	4	3	21	53
Rarotonga	Arorangi Primary School	10	159	34	203	5	5	83	76	23	11	92	45
	Avarua Primary	51	364	91	506	30	21	175	189	43	48	258	51
	Avatea Primary	0	309	100	409	0	0	165	144	55	45	189	46
	Blackrock Pre-school	33	0	0	33	11	22	0	0	0	0	22	67
	Imanuela Akatemia School	0	45	16	61	0	0	25	20	7	9	29	48
	Nikao Primary	16	101	28	145	8	8	59	42	19	9	59	41
	Nukutere College	0	0	144	144	0	0	0	0	77	67	67	47
	Papaaroa College	0	45	31	76	0	0	25	20	9	22	42	55
	Rutaki Primary	11	31	0	42	7	4	20	11	0	0	15	36
	St Joseph's Primary	19	159	0	178	9	10	84	75	0	0	85	48
	Takitumu Primary	35	159	0	194	14	21	84	75	0	0	96	49
	Tereora College	0	0	515	515	0	0	0	0	250	265	265	51
	Te-Uki-Ou School	27	85	19	131	16	11	48	37	10	9	57	44
Titikaveka College	0	0	168	168	0	0	0	0	81	87	87	52	
Total	399	2388	1881	4668	194	205	1269	1119	959	922	2246	48	

ISLAND	Students				Pre-school		Primary		Secondary		Total	
	PreS	Prim	Sec	Total	Female	%Female	Female	%Female	Female	%Female	Female	%Female
Aitutaki	42	289	264	595	21	50	136	47	125	47	282	47
Atiu	19	96	71	186	12	63	48	50	39	55	99	53
Mangaia	34	110	113	257	18	53	55	50	59	52	132	51
Manihiki	21	79	47	147	9	43	36	46	23	49	68	46
Mauke	21	69	87	177	15	71	32	46	33	38	80	45
Mitiaro	18	35	22	75	7	39	13	37	6	27	26	35
Nassau	1	21	4	26	0	0	2	10	2	50	4	15
Palmerston	9	6	2	17	4	0	4	67	2	100	10	59
Penryhn	15	65	44	124	8	53	33	51	21	48	62	50
Pukapuka	10	135	74	219	4	40	58	43	37	50	99	45
Rakahanga	7	26	7	40	5	71	13	50	3	43	21	53
Rarotonga	202	1457	1146	2805	102	50	689	47	572	50	1363	49
Total	399	2388	1881	4668	205	51	1119	47	922	49	2246	48

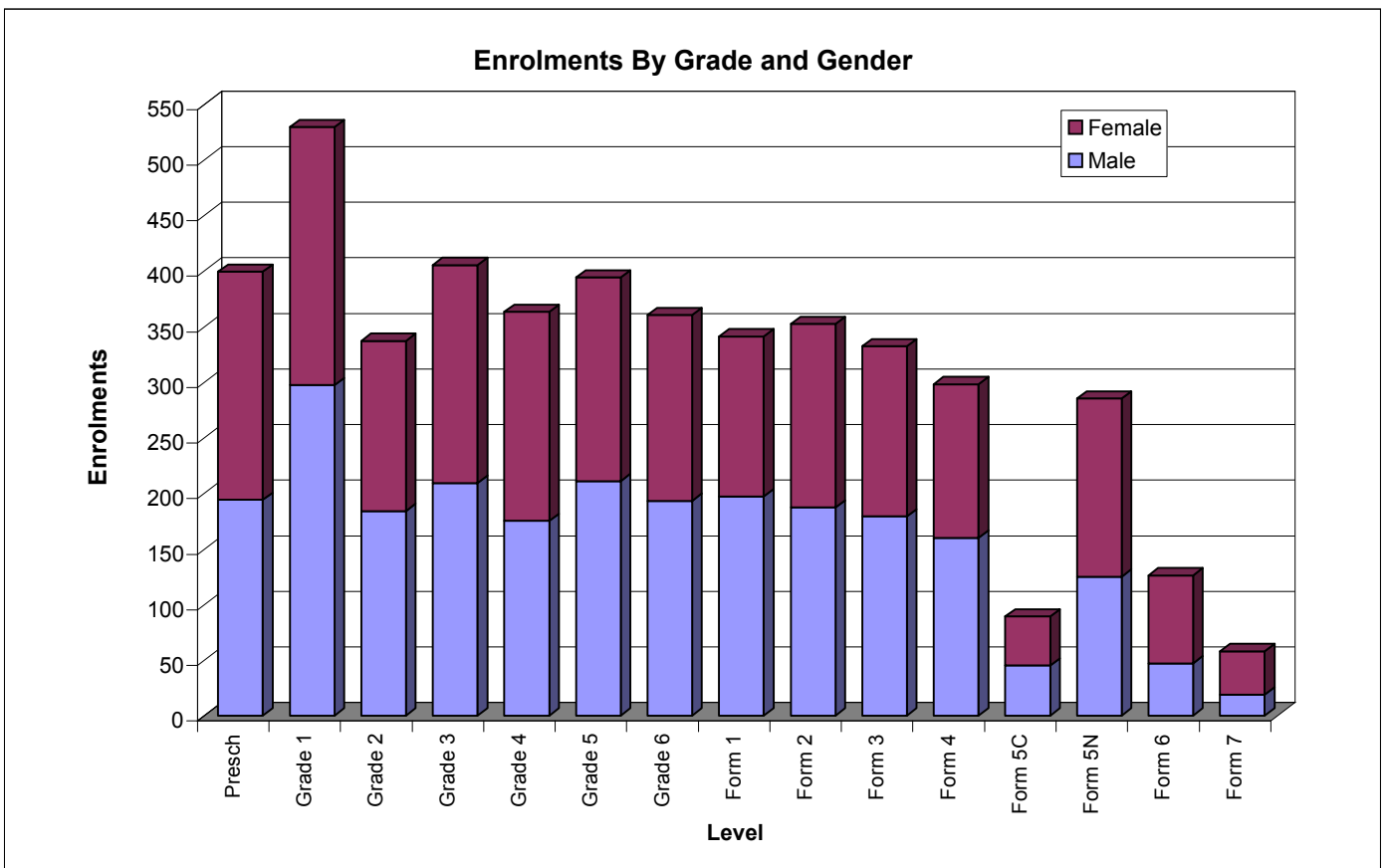
REGION	Students				Pre-school		Primary		Secondary		Total	
	PreS	Prim	Sec	Total	Female	%Female	Female	%Female	Female	%Female	Female	%Female
Northern Group	54	332	178	573	30	56	146	44	88	49	264	46
Rarotonga	202	1457	1146	2805	102	50	689	47	572	50	1363	49
Southern Group	134	599	557	1290	73	54	284	47	262	47	619	48
Total	390	2388	1881	4668	205	53	1119	47	922	49	2246	48

STATUS	Students				Pre-school		Primary		Secondary		Total	
	PreS	Prim	Sec	Total	Female	%Female	Female	%Female	Female	%Female	Female	%Female
Government	299	1973	1656	3928	165	55	912	46	809	49	1921	49
Non-government	100	415	225	740	40	40	207	50	113	50	325	44
Total	399	2388	1881	4668	205	51	1119	47	922	49	2246	48

ENROLMENTS BY GRADE AND GENDER

Grade/Form	Male	Female	%Female	Total
Presch	194	205	51	399
Grade 1	297	232	44	529
Grade 2	184	153	45	337
Grade 3	209	196	48	405
Grade 4	175	188	52	363
Grade 5	211	183	46	394
Grade 6	193	167	46	360
Form 1	197	144	42	341
Form 2	187	165	47	352
Form 3	179	153	46	332
Form 4	160	138	46	298
Form 5C	45	44	49	89
Form 5N	125	160	56	285
Form 6	47	79	63	126
Form 7	19	39	67	58
Total	2422	2246	48	4668

Girls make up 51% and 47% of the preschool and primary school (G1-G6) enrolment respectively. However 49% of secondary (F1-F7) students are girls who dominate at the senior secondary (F5C-F7) level accounting for 58% of the enrolment.



ENROLMENTS BY GRADE AND ISLAND

ISLAND	Schools	G1	G2	G3	G4	G5	G6	F1	F2	F3	F4	F5C	F5N	F6	F7	PreSch	Total
Aitutaki	4	49	45	47	51	53	44	52	43	49	39	0	60	21	0	42	595
Atiu	1	13	14	13	17	15	24	18	12	10	11	13	6	1	0	19	186
Mangaia	3	22	19	22	20	17	10	14	23	16	14	0	22	24	0	34	257
Manihiki	2	16	14	14	9	10	16	10	18	10	6	3	0	0	0	21	147
Mauke	2	15	10	11	10	11	12	20	7	16	22	9	13	0	0	21	177
Mitiaro	1	12	3	8	4	5	3	3	9	7	1	2	0	0	0	18	75
Nassau	1	6	2	2	5	3	3	4	0	0	0	0	0	0	0	1	26
Palmerston	1	3	0	1	2	0	0	1	0	0	1	0	0	0	0	9	17
Penrhyn	2	18	7	15	6	8	11	6	18	6	6	8	0	0	0	15	124
Pukapuka	1	45	11	26	19	14	20	17	14	14	15	14	0	0	0	10	219
Rakahanga	1	5	4	5	4	0	8	2	2	1	2	0	0	0	0	7	40
Rarotonga	14	325	208	241	216	258	209	194	206	203	181	40	184	80	58	202	2805
Total	33	529	337	405	363	394	360	341	352	332	298	89	285	126	58	399	4668

ENROLMENTS BY GRADE AND REGION

REGION	Schools	G1	G2	G3	G4	G5	G6	F1	F2	F3	F4	F5C	F5N	F6	F7	PreSch	Total
Nth Group	8	93	38	63	45	35	58	40	52	31	30	25	0	0	0	63	573
Rarotonga	14	325	208	241	216	258	209	194	206	203	181	40	184	80	58	202	2805
Sth Group	11	111	91	101	102	101	93	107	94	98	87	24	101	46	0	134	1290

ENROLMENTS BY GRADE AND SCHOOL STATUS

STATUS	Schools	G1	G2	G3	G4	G5	G6	F1	F2	F3	F4	F5C	F5N	F6	F7	PreSch	Total
Government	25	434	268	344	306	323	298	279	305	283	270	71	266	124	58	299	3928
Non-govt	8	95	69	61	57	71	62	62	47	49	28	18	19	2	0	100	740

STUDENT REPETITION RATES AT EACH GRADE

Year	Roll	REPEATERS		OVERAGE	
		Number	%	Number	%
Pre Sch	399	-	-	0	0
Grade 1	529	60	11.3	54	10
Grade 2	337	22	6.5	46	14
Grade 3	405	5	1.2	57	14
Grade 4	363	4	1.1	63	17
Grade 5	394	4	1.0	55	14
Grade 6	360	9	2.5	62	17
Form 1	341	1	0.3	80	23
Form 2	352	8	2.3	73	21
Form 3	332	0	0.0	161	48
Form 4	298	1	0.3	155	52
Form 5C	89	8	9.0	26	29
Form 5N	285	3	1.1	98	34
Form 6	126	0	0.0	65	52
Form 7	58	0	0.0	25	43
Total	4668	125	2.7	1020	22

The overage data is based on the assumption that, on January 1, a Grade 1 student should be 5, a Grade 2 student should be 6 and each succeeding Grade student should be one year older. Those older than the assumed age for the grade are deemed to be overage. Compared to the year 2001 there has been an increase in overage students. Total numbers have increased from 990(21%) to 1020(22%).

The number of students repeating at each level is directly recorded on each school's 2002 EMIS survey form by the school's principal. Formal entry criteria tend to apply to only Form 5NZSC level and higher.

ENROLMENTS BY GRADE/FORM

School	PreSch	Gr 1	Gr 2	Gr 3	Gr 4	Gr 5	Gr 6	F 1	F 2	F 3	F 4	F 5C	F 5N	F 6	F 7	Total
Blackrock Pre-school	33	0	0	0	0	0	0	0	0	0	0	0	0	0	0	33
Te-Uki-Ou School	27	16	16	18	11	15	9	8	11	0	0	0	0	0	0	131
Avarua Primary	51	63	59	57	59	70	56	40	51	0	0	0	0	0	0	506
Avatea Primary	0	48	38	60	55	62	46	45	55	0	0	0	0	0	0	409
Takitumu Primary	35	36	20	26	29	27	21	0	0	0	0	0	0	0	0	194
Nikao Primary	16	37	14	17	8	9	16	13	15	0	0	0	0	0	0	145
Rutaki Primary	11	8	6	6	3	5	3	0	0	0	0	0	0	0	0	42
St Joseph's Primary	19	39	27	20	24	28	21	0	0	0	0	0	0	0	0	178
Imanuela Akatemia School	0	15	1	7	4	7	11	4	1	4	1	0	4	2	0	61
Arorangi Primary School	10	59	18	20	19	25	18	18	16	0	0	0	0	0	0	203
Tereora College	0	0	0	0	0	0	0	0	0	117	119	0	143	78	58	515
Titikaveka College	0	0	0	0	0	0	0	29	24	37	34	22	22	0	0	168
Nukutere College	0	0	0	0	0	0	0	30	23	38	20	18	15	0	0	144
Papaaroa College	0	4	9	10	4	10	8	7	10	7	7	0	0	0	0	76
Amuri Primary	0	0	0	0	0	0	0	0	0	0	0	0	0	0	0	0
Araura Primary	17	36	21	32	30	37	22	0	0	0	0	0	0	0	0	195
Vaitau Primary	12	2	14	12	12	12	17	0	0	0	0	0	0	0	0	81
Aitutaki SDA	13	11	10	3	9	4	5	0	0	0	0	0	0	0	0	55
Araura College	0	0	0	0	0	0	0	52	43	49	39	0	60	21	0	264
Ivirua Primary	10	4	5	3	5	6	5	0	0	0	0	0	0	0	0	38
Tamarua Primary	4	7	2	0	0	0	0	0	0	0	0	0	0	0	0	13
Mangaia School	20	11	12	19	15	11	5	14	23	16	14	0	22	24	0	206
Enuamanu School	19	13	14	13	17	15	24	18	12	10	11	13	6	1	0	186
St Mary's Primary	8	10	6	3	5	7	8	13	2	0	0	0	0	0	0	62
Mauke School	13	5	4	8	5	4	4	7	5	16	22	9	13	0	0	115
Mitiaro High School	18	12	3	8	4	5	3	3	9	7	1	2	0	0	0	75
Lucky Primary	9	3	0	1	2	0	0	1	0	0	1	0	0	0	0	17
Pukapuka High School	10	45	11	26	19	14	20	17	14	14	15	14	0	0	0	219
Nassau Primary	1	6	2	2	5	3	3	4	0	0	0	0	0	0	0	26
Tukao Primary	8	7	5	9	4	4	11	1	7	6	4	3	0	0	0	69
Tauhunu High School	13	9	9	5	5	6	5	9	11	4	2	0	0	0	0	78
Rakahanga High school	7	5	4	5	4	0	8	2	2	1	2	0	0	0	0	40
Tetautua Primary	3	5	3	0	1	0	2	1	3	1	3	0	0	0	0	22
Omoka High School	12	13	4	15	5	8	9	5	15	5	3	8	0	0	0	102
Total	399	529	337	405	363	394	360	341	352	332	298	89	285	126	58	4668

1990 - 2002 ENROLMENTS BY GRADE/FORM

Year	PreSch	Gr 1	Gr 2	Gr 3	Gr 4	Gr 5	Gr 6	F 1	F 2	F 3	F 4	F 5C	F 5N	F 6	F 7	Total
1990	480	531	373	388	377	383	390	351	392	382	323	316	215	72	31	5,004
1991	467	567	392	408	402	390	367	387	357	364	337	318	221	85	24	5,086
1992	575	649	361	387	391	395	381	385	403	352	343	315	207	109	29	5,282
1993	530	745	408	387	389	386	393	406	380	381	324	315	243	108	51	5,446
1994	527	732	485	389	366	388	390	434	331	346	346	279	237	91	30	5,371
1995	529	736	488	460	430	368	402	369	408	370	306	324	202	96	20	5,508
1996	530	757	475	488	438	422	376	365	383	365	307	295	235	92	32	5,560
1997	447	733	433	442	444	445	385	329	343	335	298	272	215	90	24	5,235
1998	460	686	416	381	414	407	407	355	304	301	284	240	176	93	26	4,950
1999	422	667	405	397	367	381	377	359	314	277	267	222	183	96	33	4,767
2000	465	514	366	406	370	353	370	365	343	274	219	216	178	74	35	4,548
2001	451	504	411	385	374	377	351	353	363	333	244	200	179	110	22	4,657
2002	399	529	337	405	363	394	360	341	352	332	298	89	285	126	58	4,668
Average	483	642	412	409	394	391	381	369	359	339	300	262	214	96	32	5,083

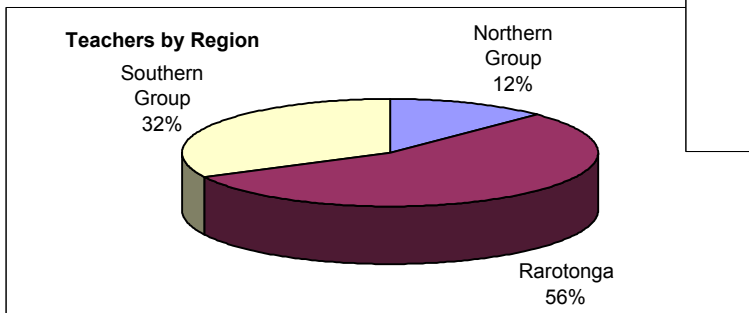
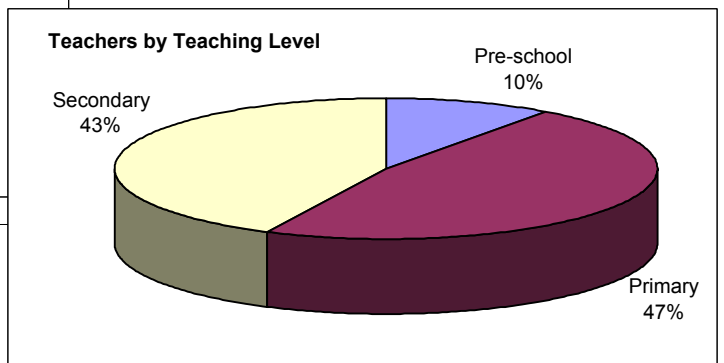
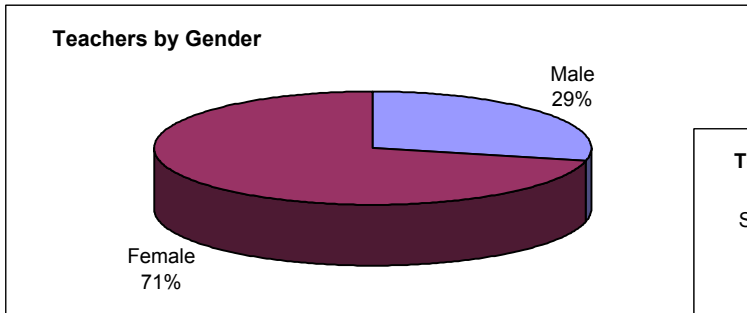
ENROLMENTS BY GRADE, AGE AND GENDER

Grade/Form	Total																Total
	4	5	6	7	8	9	10	11	12	13	14	15	16	17	18	19+	
Presch	394	5	0	0	0	0	0	0	0	0	0	0	0	0	0	0	399
Grade 1	152	323	53	1	0	0	0	0	0	0	0	0	0	0	0	0	529
Grade 2	1	62	228	46	0	0	0	0	0	0	0	0	0	0	0	0	337
Grade 3	0	3	57	288	51	6	0	0	0	0	0	0	0	0	0	0	405
Grade 4	0	0	0	39	261	59	3	1	0	0	0	0	0	0	0	0	363
Grade 5	0	0	0	2	35	302	54	1	0	0	0	0	0	0	0	0	394
Grade 6	0	0	0	0	0	28	270	55	6	1	0	0	0	0	0	0	360
Form 1	0	0	0	0	0	0	39	222	65	15	0	0	0	0	0	0	341
Form 2	0	0	0	0	0	0	11	26	242	70	3	0	0	0	0	0	352
Form 3	0	0	0	0	0	0	1	6	30	134	142	18	1	0	0	0	332
Form 4	0	0	0	0	0	0	0	0	4	38	101	144	9	1	1	0	298
Form 5C	0	0	0	0	0	0	0	0	0	1	3	59	17	6	2	1	89
Form 5N	0	0	0	0	0	0	0	0	0	0	7	31	149	62	32	4	285
Form 6	0	0	0	0	0	0	0	0	0	0	0	2	14	45	50	15	126
Form 7	0	0	0	0	0	0	0	0	0	0	0	0	0	9	24	25	58
Total	547	393	338	376	347	395	378	311	347	259	256	254	190	123	109	45	4668
Female																	
Grade/Form	4	5	6	7	8	9	10	11	12	13	14	15	16	17	18	19+	Total
Presch	204	1	0	0	0	0	0	0	0	0	0	0	0	0	0	0	205
Grade 1	74	142	16	0	0	0	0	0	0	0	0	0	0	0	0	0	232
Grade 2	1	36	103	13	0	0	0	0	0	0	0	0	0	0	0	0	153
Grade 3	0	1	34	138	22	1	0	0	0	0	0	0	0	0	0	0	196
Grade 4	0	0	0	21	136	29	2	0	0	0	0	0	0	0	0	0	188
Grade 5	0	0	0	1	15	144	23	0	0	0	0	0	0	0	0	0	183
Grade 6	0	0	0	0	0	16	129	18	3	1	0	0	0	0	0	0	167
Form 1	0	0	0	0	0	0	19	97	26	2	0	0	0	0	0	0	144
Form 2	0	0	0	0	0	0	8	19	114	23	1	0	0	0	0	0	165
Form 3	0	0	0	0	0	0	1	3	16	68	59	6	0	0	0	0	153
Form 4	0	0	0	0	0	0	0	0	1	21	48	60	7	1	0	0	138
Form 5C	0	0	0	0	0	0	0	0	0	1	2	29	8	2	1	1	44
Form 5N	0	0	0	0	0	0	0	0	0	0	6	19	72	35	28	0	160
Form 6	0	0	0	0	0	0	0	0	0	0	0	1	8	33	30	7	79
Form 7	0	0	0	0	0	0	0	0	0	0	0	0	0	6	18	15	39
Total	279	180	153	173	173	190	182	137	160	116	116	115	95	77	77	23	2246
Male																	
Grade/Form	4	5	6	7	8	9	10	11	12	13	14	15	16	17	18	19+	Total
Presch	190	4	0	0	0	0	0	0	0	0	0	0	0	0	0	0	194
Grade 1	78	181	37	1	0	0	0	0	0	0	0	0	0	0	0	0	297
Grade 2	0	26	125	33	0	0	0	0	0	0	0	0	0	0	0	0	184
Grade 3	0	2	23	150	29	5	0	0	0	0	0	0	0	0	0	0	209
Grade 4	0	0	0	18	125	30	1	1	0	0	0	0	0	0	0	0	175
Grade 5	0	0	0	1	20	158	31	1	0	0	0	0	0	0	0	0	211
Grade 6	0	0	0	0	0	12	141	37	3	0	0	0	0	0	0	0	193
Form 1	0	0	0	0	0	0	20	125	39	13	0	0	0	0	0	0	197
Form 2	0	0	0	0	0	0	3	7	128	47	2	0	0	0	0	0	187
Form 3	0	0	0	0	0	0	0	3	14	66	83	12	1	0	0	0	179
Form 4	0	0	0	0	0	0	0	0	3	17	53	84	2	0	1	0	160
Form 5C	0	0	0	0	0	0	0	0	0	0	1	30	9	4	1	0	45
Form 5N	0	0	0	0	0	0	0	0	0	0	1	12	77	27	4	4	125
Form 6	0	0	0	0	0	0	0	0	0	0	0	1	6	12	20	8	47
Form 7	0	0	0	0	0	0	0	0	0	0	0	0	0	3	6	10	19
Total	268	213	185	203	174	205	196	174	187	143	140	139	95	46	32	22	2422

TEACHERS

TEACHERS BY GENDER, TEACHING LEVEL AND NATIONALITY

STATUS	Teachers			Teaching Level			Nationality	
	Total	Female	%Female	Pre-school	Primary	Secondary	Cook-Is	%CIs.
Government	239	168	70	20	109	107	218	91
Non-government	51	42	82	9	26	16	35	69
Total	290	210	72	29	135	123	253	87

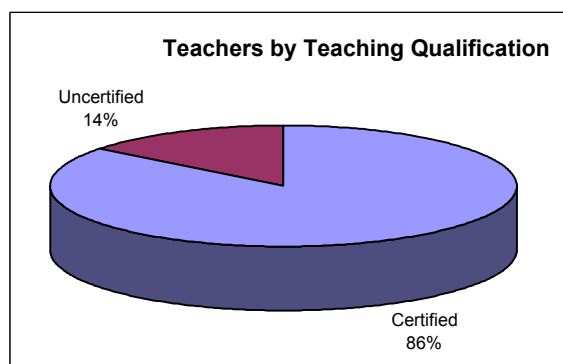
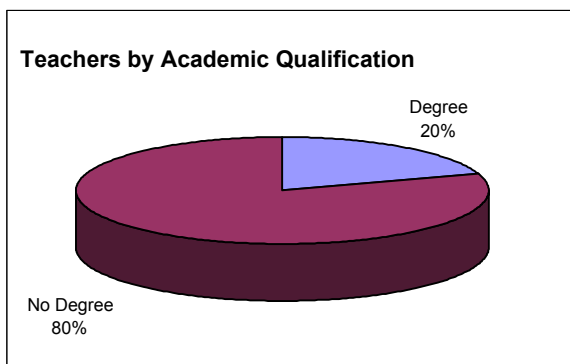


REGION	Teachers			Teaching Level			Nationality	
	Total	Female	%Female	Pre-school	Primary	Secondary	Cook-Is	%CIs.
Northern Group	36	25	69	6	19	11	33	92
Rarotonga	160	118	74	14	79	67	134	84
Southern Group	94	67	71	9	42	43	84	89

ISLAND	Teachers			Teaching Level			Nationality	
	Total	Female	%Female	Pre-school	Primary	Secondary	Cook-Is	%CIs.
Aitutaki	41	30	73	3	19	19	39	95
Atiu	13	9	69	1	6	6	11	85
Mangaia	19	12	63	2	8	9	17	89
Manihiki	8	8	100	2	4	2	8	100
Mauke	16	11	69	2	6	8	12	75
Mitiaro	5	5	100	1	3	1	5	100
Nassau	1	1	100	0	1	0	1	100
Palmerston	1	0	0	0	1	0	0	0
Penrhyn	9	7	78	2	5	2	7	78
Pukapuka	13	6	46	1	6	6	13	100
Rakahanga	4	3	75	1	2	1	4	100
Rarotonga	160	118	74	14	79	67	134	84

TEACHER QUALIFICATIONS

STATUS	Total Teachers	No. of Teachers with		No. of Teachers		% Teachers (with)	
		Degree	No Degree	Certified	Uncertified	Degree	Certified
Government	239	48	191	214	25	20	90
Non-government	51	10	41	34	17	20	67
Total	290	58	232	248	42	20	86



REGION	Total Teachers	No. of Teachers with		No. of Teachers		% Teachers (with)	
		Degree	No Degree	Certified	Uncertified	Degree	Certified
Northern Group	36	3	33	26	10	8	72
Rarotonga	160	36	124	139	21	23	87
Southern Group	94	19	75	83	11	20	88

ISLAND	Total Teachers	No. of Teachers with		No. of Teachers		% Teachers (with)	
		Degree	No Degree	Certified	Uncertified	Degree	Certified
Aitutaki	41	7	34	38	3	17	93
Atiu	13	3	10	10	3	23	77
Mangaia	19	3	16	19	0	16	100
Manihiki	8	1	7	6	2	13	75
Mauke	16	6	10	12	4	38	75
Mitiaro	5	0	5	4	1	0	80
Nassau	1	0	1	1	0	0	100
Palmerston	1	1	0	0	1	0	0
Penrhyn	9	0	9	6	3	0	67
Pukapuka	13	1	12	10	3	8	77
Rakahanga	4	0	4	3	1	0	75
Rarotonga	160	36	124	139	21	23	87

Note:

1. Certified teachers are those with a Teachers College Certificate or Diploma.
2. The number of teachers with degrees and certified to teach are as reported by Principals and are not derived from a file check of verified qualifications held by the Ministry of Education.

STUDENT : TEACHER RATIOS

STATUS	Number of Teachers			Total Students	S : T RATIOS		
	Male	Female	Total		2002	2001	Change
Government	71	168	239	3928	16.4	16.8	-0.3
Non-government	9	42	51	740	14.5	13.7	0.8
Total	80	210	290	4668	16.1	16.2	-0.1

REGION	Number of Teachers			Total Students	S : T RATIOS		
	Male	Female	Total		2002	2001	Change
Northern Group	11	25	36	573	15.9	17.3	-1.3
Rarotonga	42	118	160	2805	17.5	17.4	0.2
Southern Group	27	67	94	1290	13.7	14.0	-0.3
Total	80	210	290	4668	16.1	16.2	-0.1

ISLAND	Number of Teachers			Total Students	S : T RATIOS		
	Male	Female	Total		2002	2001	Change
Aitutaki	11	30	41	595	14.5	14.6	-0.1
Atiu	4	9	13	186	14.3	15.1	-0.8
Mangaia	7	12	19	257	13.5	14.0	-0.5
Manihiki	0	8	8	147	18.4	12.9	5.5
Mauke	5	11	16	177	11.1	11.8	-0.7
Mitiaro	0	5	5	75	15.0	13.6	1.4
Nassau	0	1	1	26	26.0	38.0	-12.0
Palmerston	1	0	1	17	0.0	0.0	0.0
Penrhyn	2	7	9	124	13.8	20.7	-6.9
Pukapuka	7	6	13	219	16.8	20.8	-4.0
Rakahanga	1	3	4	40	10.0	9.5	0.5
Rarotonga	42	118	160	2805	17.5	17.4	0.1
Total	80	210	290	4668	16.1	16.2	-0.1

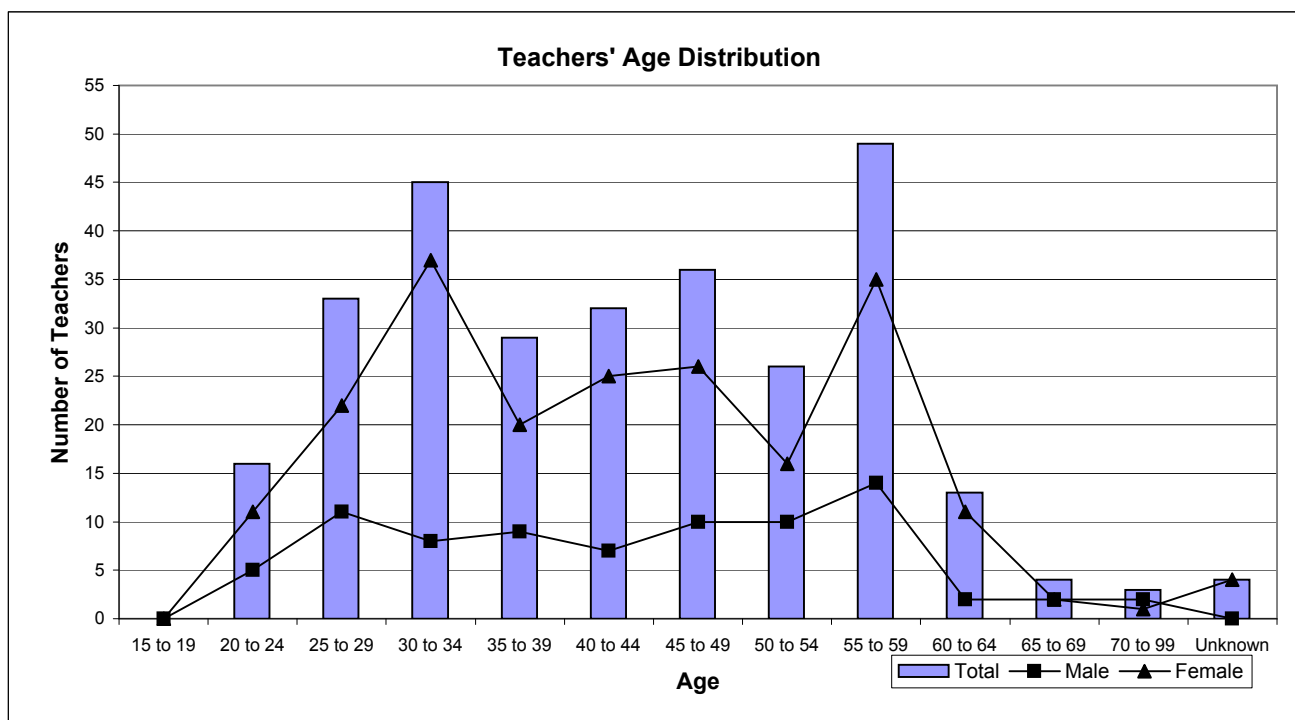
Note: Teacher numbers include principals and senior teachers.

STUDENT : TEACHER RATIOS (contd)

SCHOOL	Teachers						S : T RATIO			
	Pre-sch	Primary	Secondary	Male	Female	Total	Pre-sch	Primary	Secondary	Total
Aitutaki SDA	1	2	0	0	3	3	13	21	-	18
Araura College	0	0	19	10	9	19	-	-	14	14
Araura Primary	1	11	0	1	11	12	17	16	-	16
Arorangi Primary School	1	8	2	2	9	11	10	20	17	18
Avarua Primary	2	17	4	4	19	23	26	21	23	22
Avatea Primary	0	16	4	3	17	20	-	19	25	20
Blackrock Pre-school	2	0	0	0	2	2	17	-	-	17
Enuamanu School	1	6	6	4	9	13	19	16	12	14
Imanuela Akatemia School	1	3	1	1	4	5	-	15	16	12
Ivirua Primary	1	2	0	1	2	3	10	14	-	13
Lucky Primary	0	1	0	1	0	1	-	6	-	17
Mangaia School	1	5	9	5	10	15	20	15	13	14
Mauke School	1	3	7	5	6	11	13	10	10	10
Mitiaro High School	1	3	1	0	5	5	-	12	-	15
Nassau Primary	0	1	0	0	1	1	-	21	-	26
Nikao Primary	1	7	1	2	7	9	-	-	28	16
Nukutere College	0	0	10	4	6	10	-	-	14	14
Omoka High School	1	4	1	1	5	6	-	14	36	17
Papaaroa College	0	3	3	2	4	6	-	15	10	13
Pukapuka High School	1	6	6	7	6	13	-	23	12	17
Rakahanga High school	1	2	1	1	3	4	7	13	-	10
Rutaki Primary	1	2	0	1	2	3	11	16	-	14
St Joseph's Primary	1	8	0	2	7	9	19	20	-	20
St Mary's Primary	1	3	1	0	5	5	8	13	-	12
Takitumu Primary	2	8	0	1	9	10	-	20	-	19
Tamarua Primary	0	1	0	1	0	1	-	9	-	13
Tauhunu High School	1	2	1	0	4	4	13	20	26	20
Tereora College	0	0	29	15	14	29	-	-	18	18
Tetautua Primary	1	1	1	1	2	3	-	11	-	7
Te-Uki-Ou School	3	7	1	0	11	11	-	-	19	12
Titikaveka College	0	0	12	5	7	12	-	-	14	14
Tukao Primary	1	2	1	0	4	4	-	-	-	17
Vaitau Primary	1	6	0	0	7	7	12	12	-	12
Total	29	140	121	80	210	290	14	17	16	16

AGE DISTRIBUTION OF TEACHERS

Age Range	Total	Male	Female	%Female	Total %
15 to 19	0	0	0	0	0
20 to 24	16	5	11	69	5
25 to 29	33	11	22	67	10
30 to 34	45	8	37	82	18
35 to 39	29	9	20	69	10
40 to 44	32	7	25	78	12
45 to 49	36	10	26	72	12
50 to 54	26	10	16	62	8
55 to 59	49	14	35	71	17
60 to 64	13	2	11	85	5
65 to 69	4	2	2	50	1
70 to 99	3	2	1	33	0
Unknown	4	0	4	100	2
Total	290	80	210	72	



2000/2001 TEACHER COMPARISONS

Teachers	2001	2001	Change	% Change
Total	287	290	3	1
Male	82	80	-2	-3
Female	205	210	5	2
Cook Islanders	253	253	0	0
Non-Cook Islanders	34	37	3	8
Trained Teachers Cert	241	248	7	3
Tchrs with a Degree	45	58	13	22

SCHOOL BUILDINGS AND FACILITIES

SCHOOL CAPACITY

STATUS	Schools	Students	Teachers	Classrooms	S:C Ratio
Church	6	576	38	38	15
Government	25	3928	239	248	16
Private	2	164	13	7	23
Total	33	4668	290	293	16

Note: Classrooms exclude specialist rooms.

S:C Ratio - number of students per class.

REGION	Schools	Students	Teachers	Classrooms	S:C Ratio
Northern Group	8	573	36	38	15
Rarotonga	14	2805	160	150	19
Southern Group	11	1290	94	105	12

DISTRICT	Schools	Students	Teachers	Classrooms	S:C Ratio
Aitutaki	4	595	41	38	16
Atiu	1	186	13	20	9
Mangaia	3	257	19	26	10
Manihiki	2	147	8	9	16
Mauke	2	177	16	14	13
Mitiaro	1	75	5	7	11
Nassau	1	26	1	2	13
Palmerston	1	17	1	1	17
Penrhyn	2	124	9	8	16
Pukapuka	1	219	13	12	18
Rakahanga	1	40	4	6	7
Rarotonga	14	2805	160	150	19

SELECTED BUILDINGS

BUILDING	2002				Changes from 2001			
	Total	Good	To Repair	Area(sq.m)	Total	Good	To Repair	Area(sq.m)
Classroom	293	157	136	34220	-5	2	-6	3160
Office	58	37	21	2119	-1	-4	3	-41
Workshop	12	3	9	2552	-2	-1	-1	-54
Home /Ec.	13	5	8	1398	2	0	2	10
Science Lab.	16	3	13	1725	0	0	0	10
Hall	9	4	5	5024	-1	-2	1	-1049
Staffroom	26	18	8	2601	-1	-2	1	-35
Library	34	28	6	3681	2	1	1	332

SELECTED APPARATUS IN ALL SCHOOLS

APPARATUS	2001	2002	Change
Duplicator	9	9	0
Photocopier	43	43	0
Typewriter	101	101	0
Computer	156	156	0
Radio	55	55	0
Television/Video	26	26	0
Overhead projector	25	25	0

SELECTED FURNITURE IN ALL SCHOOLS

Type of Furniture	2002			Change from 2001		
	Total	Good	To Repair	Total	Good	To Repair
Desk/Table	4176	3698	478	-93	166	-259
Chair/Form	5217	4636	581	7	127	-120
Workbench	303	208	95	-29	-15	-14
Blackboard	423	365	58	14	26	-12